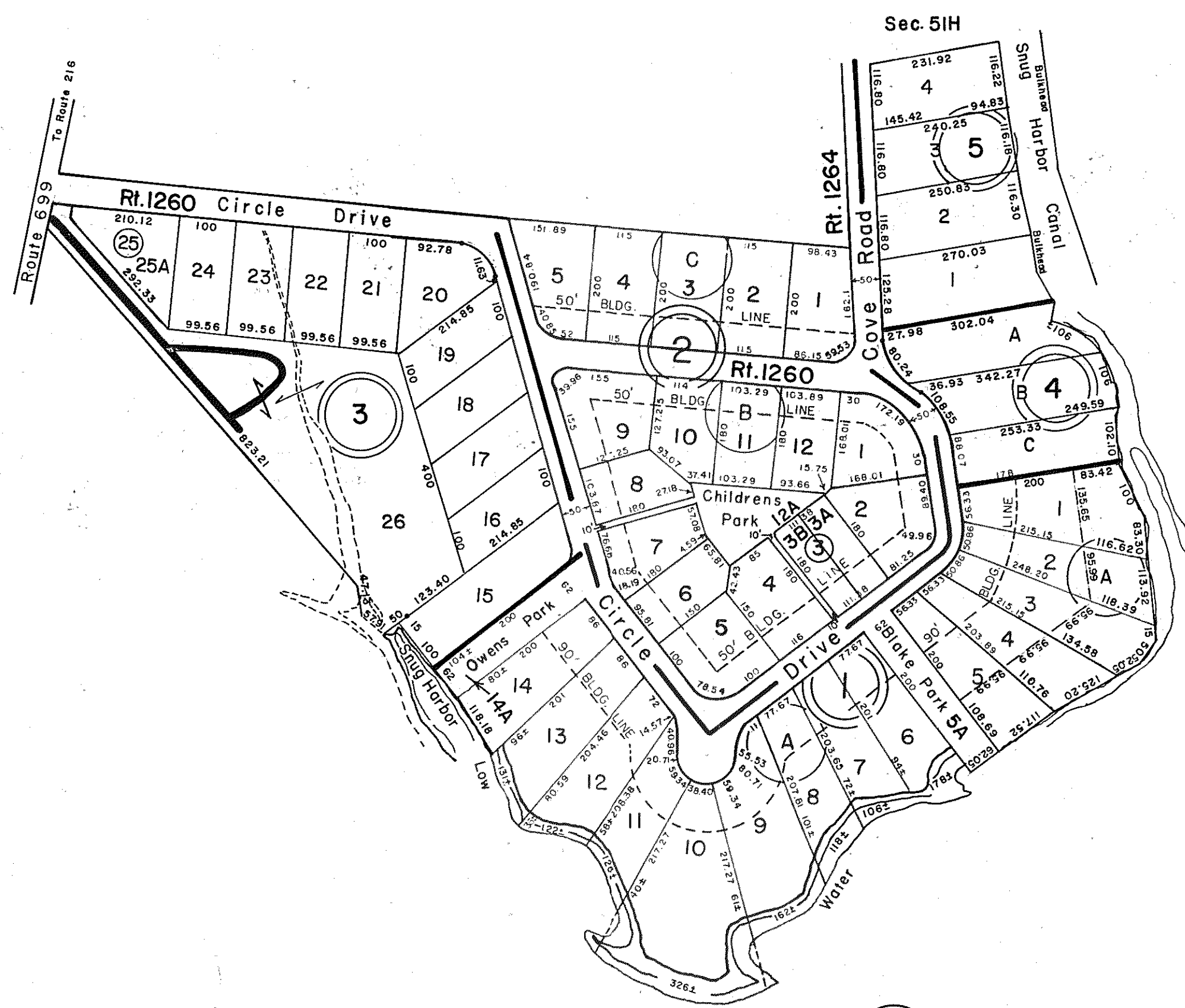
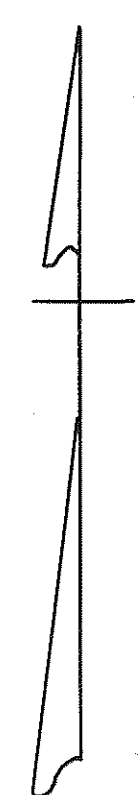


# GLOUCESTER COUNTY



- ① SNUG HARBOR OF SARAH'S CREEK ESTATES—MAP NO.2, BLOCK A—PB.2, Pg.189 & 190 PB.9, Pg.51
- ② SNUG HARBOR OF SARAH'S CREEK ESTATES—MAP NO.3, BLOCKS B & C—PB.3, Pg.60 & PB.20, Pg.417
- ③ SNUG HARBOR ANNEX—PB.6, Pg.178 & PB.7, Pg.65 LOTS 25B & 26 REVISED PB.23-570 5/26/98
- ④ SNUG HARBOR - LOTS A, B, C - PB.6, Pg.143
- ⑤ FOR SNUG HARBOR ANNEX—SEC.I, BK. A—SEE 51H((4))  
SNUG HARBOR ANNEX—SEC.I, BK. C—LOTS 1-4, PB.8, Pg.49

