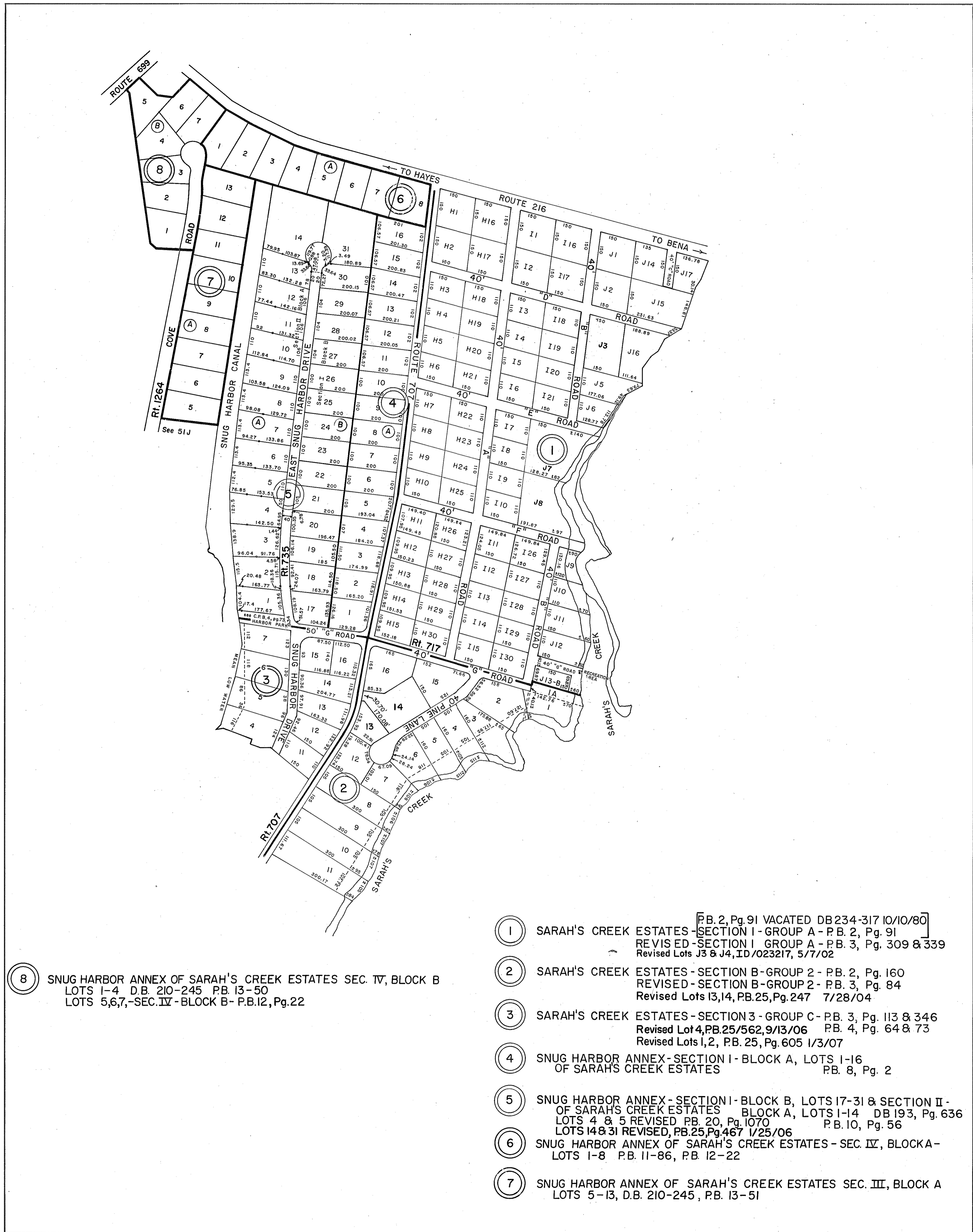
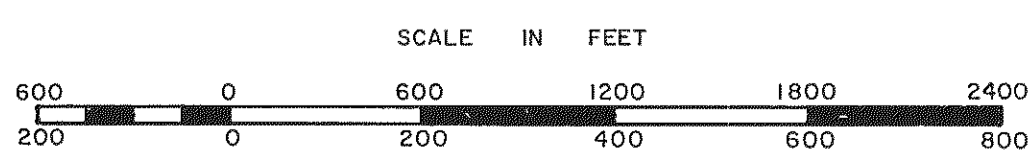


GLOUCESTER COUNTY



8 SNUG HARBOR ANNEX OF SARAH'S CREEK ESTATES SEC. IV, BLOCK B
 LOTS 1-4, D.B. 210-245, P.B. 13-50
 LOTS 5,6,7, -SEC. IV - BLOCK B - P.B. 12, Pg. 22

- 1 SARAH'S CREEK ESTATES - SECTION I - GROUP A - P.B. 2, Pg. 91
 REVIS ED - SECTION I - GROUP A - P.B. 3, Pg. 309 & 339
 Revised Lots J3 & J4, ID/023217, 5/7/02
- 2 SARAH'S CREEK ESTATES - SECTION B - GROUP 2 - P.B. 2, Pg. 160
 REVIS ED - SECTION B - GROUP 2 - P.B. 3, Pg. 84
 Revised Lots I3, I4, P.B. 25, Pg. 247 7/28/04
- 3 SARAH'S CREEK ESTATES - SECTION 3 - GROUP C - P.B. 3, Pg. 113 & 346
 Revised Lot 4, P.B. 25/562, 9/13/06 P.B. 4, Pg. 64 & 73
 Revised Lots I, 2, P.B. 25, Pg. 605 1/3/07
- 4 SNUG HARBOR ANNEX - SECTION I - BLOCK A, LOTS 1-16
 OF SARAH'S CREEK ESTATES P.B. 8, Pg. 2
- 5 SNUG HARBOR ANNEX - SECTION I - BLOCK B, LOTS 17-31 & SECTION II -
 OF SARAH'S CREEK ESTATES BLOCK A, LOTS 1-14 DB 193, Pg. 636
 LOTS 4 & 5 REVIS ED P.B. 20, Pg. 1070 P.B. 10, Pg. 56
 LOTS 14 & 31 REVIS ED, P.B. 25, Pg. 467 1/25/06
- 6 SNUG HARBOR ANNEX OF SARAH'S CREEK ESTATES - SEC. IV, BLOCK A -
 LOTS 1-8 P.B. 11-86, P.B. 12-22
- 7 SNUG HARBOR ANNEX OF SARAH'S CREEK ESTATES SEC. III, BLOCK A
 LOTS 5-13, D.B. 210-245, P.B. 13-51



YORK DISTRICT

SECTION _____
 INSERT 51H