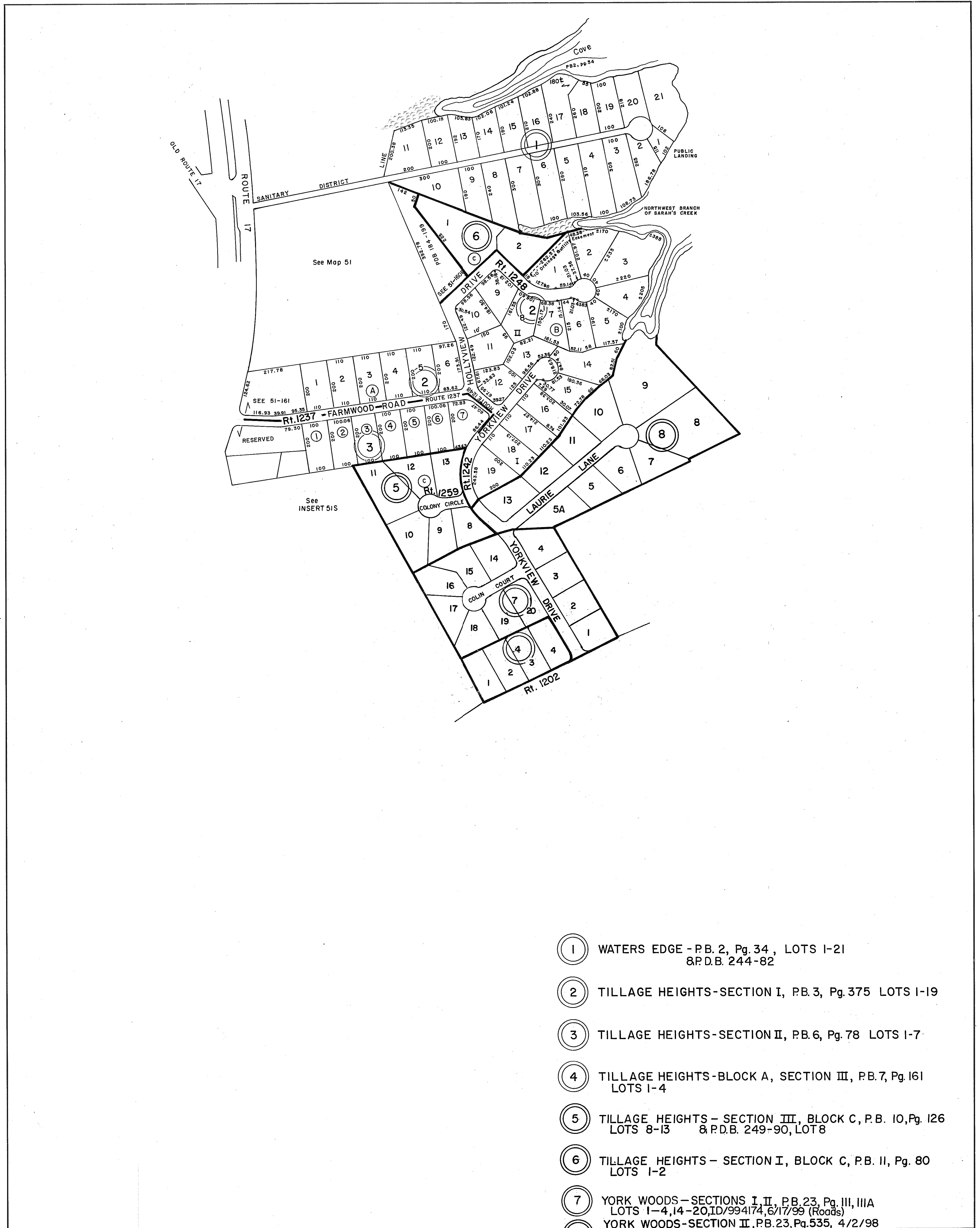
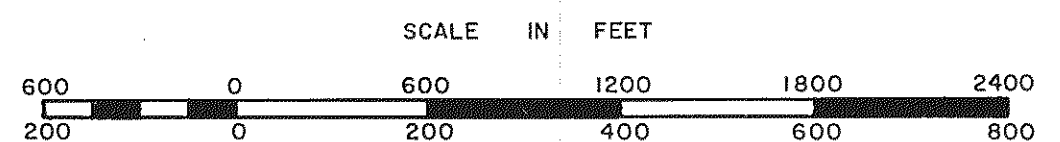


# GLOUCESTER COUNTY



- ① WATERS EDGE - P.B. 2, Pg. 34, LOTS 1-21  
8P.D.B. 244-82
- ② TILLAGE HEIGHTS-SECTION I, P.B. 3, Pg. 375 LOTS 1-19
- ③ TILLAGE HEIGHTS-SECTION II, P.B. 6, Pg. 78 LOTS 1-7
- ④ TILLAGE HEIGHTS-BLOCK A, SECTION III, P.B. 7, Pg. 161  
LOTS 1-4
- ⑤ TILLAGE HEIGHTS - SECTION III, BLOCK C, P.B. 10, Pg. 126  
LOTS 8-13 & P.D.B. 249-90, LOT 8
- ⑥ TILLAGE HEIGHTS - SECTION I, BLOCK C, P.B. 11, Pg. 80  
LOTS 1-2
- ⑦ YORK WOODS - SECTIONS I, II, P.B. 23, Pg. III, IIIA  
LOTS 1-4, 14-20, ID/994174, 6/17/99 (Roads)
- ⑧ YORK WOODS-SECTION II, P.B. 23, Pg. 535, 4/2/98  
LOTS 5-13 & LOT 5A



GLOUCESTER POINT DISTRICT

SECTION \_\_\_\_\_  
INSERT **51F**