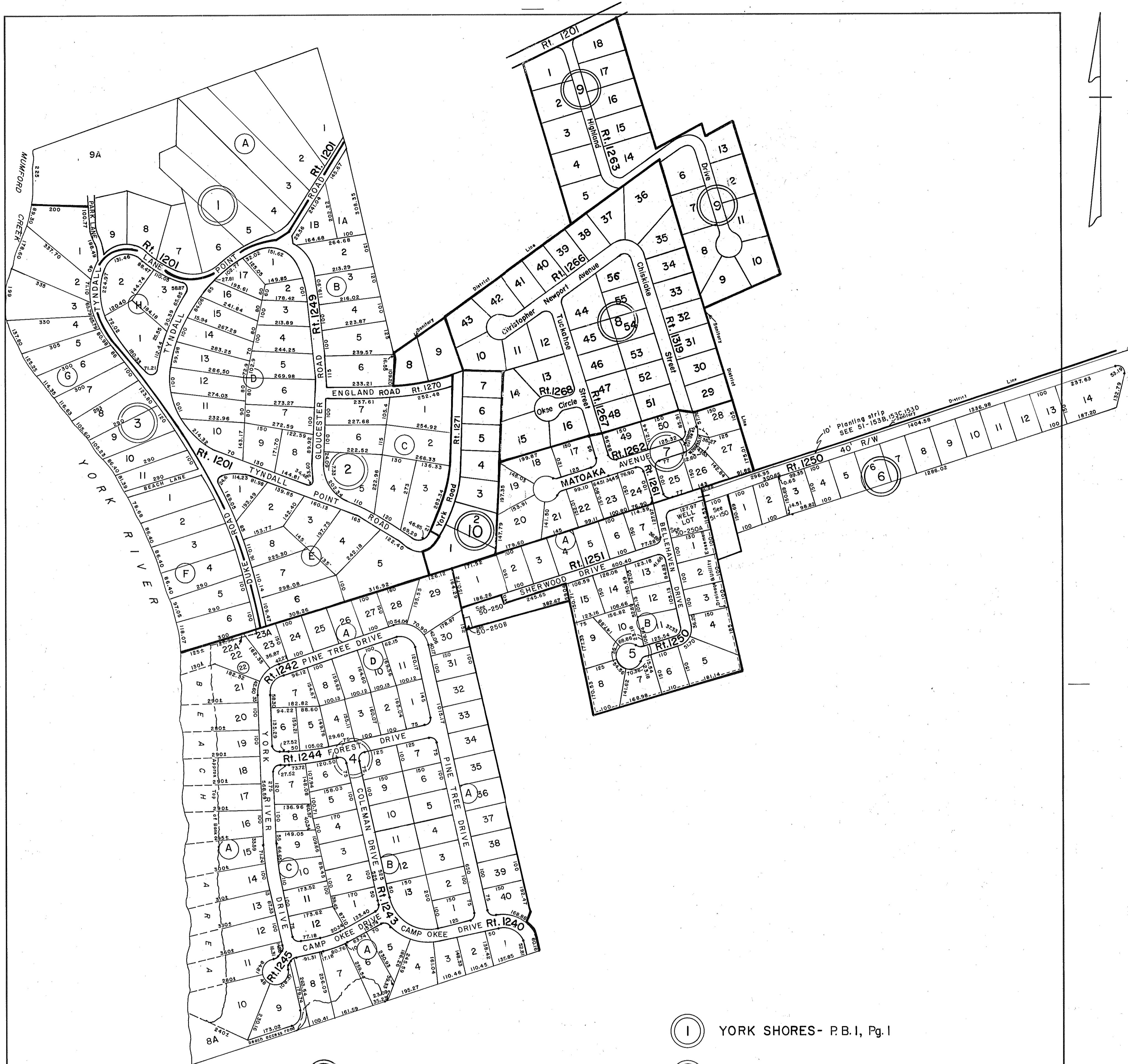


GLOUCESTER COUNTY



- 1

YORK SHORES- P.B.1, Pg.1
- 2

REVISED PLAN OF A PORTION OF YORK SHORES
BK. B, C, D, E, H & I P.B.1, Pg. 385
- 3

CHISKIAKE VILLAGE - SEC. B, D.B. 207-470
P.B. 12-121 LOTS 10-16, 29-48, 51-56
- 4

YORK RIVER PINES P.B.3, Pg. 308
LOT 40 REVISED P.B. 22, Pg.567-7/14/92
- 5

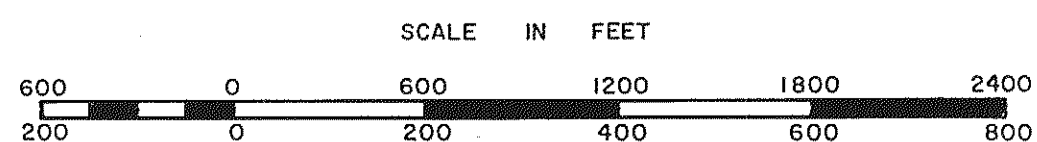
HIGHLAND VILLAGE - DB 207-567
P.B. 12-125 LOTS 1-18
- 6

BELLEHAVEN - P.B. 5, Pg. 63 - DB 152, Pg. 159
- 7

BELLEHAVEN ANNEX P.B. 6, Pg. 159
- 10

CHISKIAKE VILLAGE - SEC. C. P.B.20, Pg.556 3-26-84
- 7

CHISKIAKE VILLAGE -Sec. A P.B. 9, Pg. 13



GLOUCESTER POINT DISTRICT

SECTION _____
INSERT **50B**