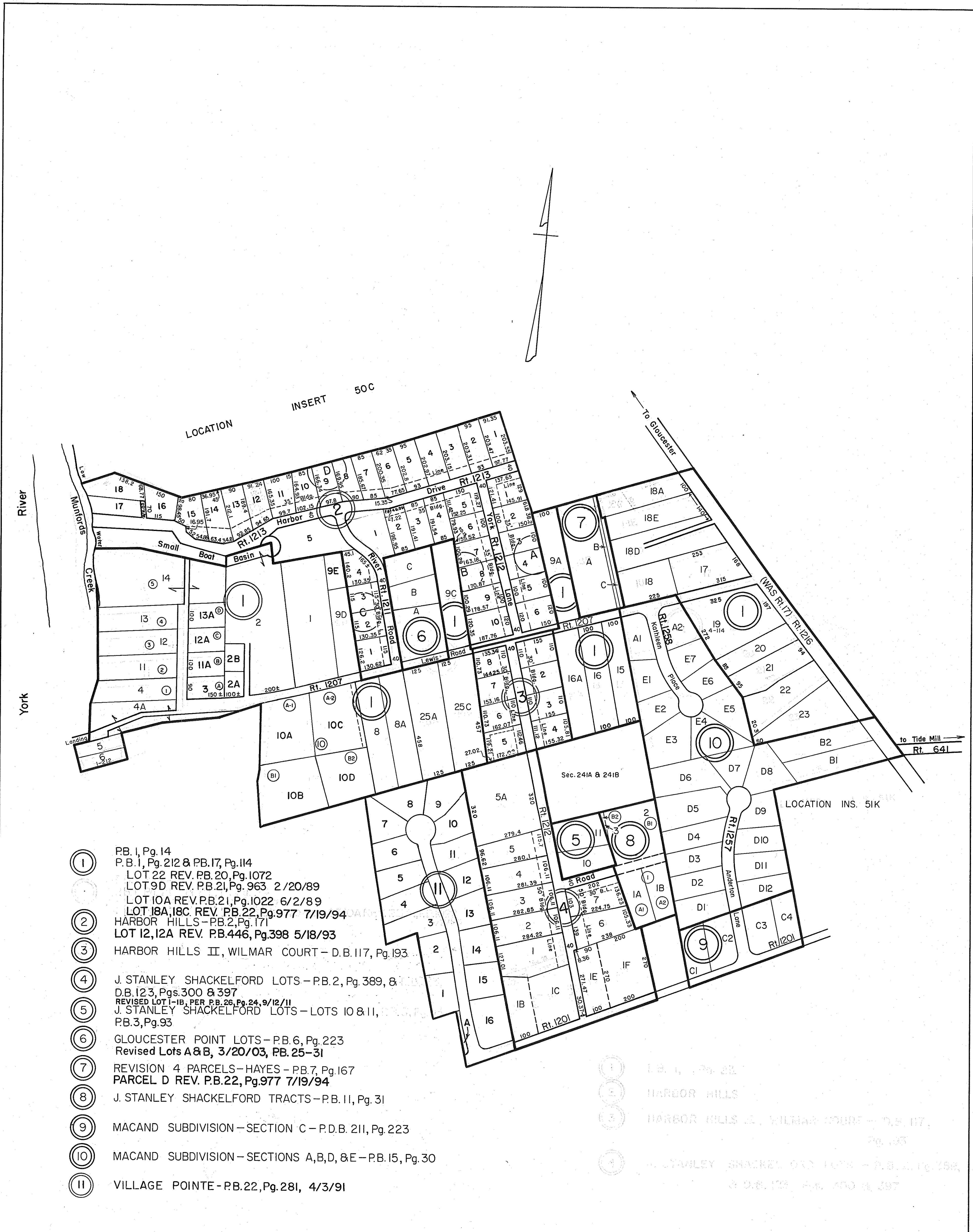


GLOUCESTER COUNTY



- ① PB. I, Pg. 14
P.B. I, Pg. 212 & P.B. 17, Pg. 114
LOT 22 REV. P.B. 20, Pg. 1072
LOT 9D REV. P.B. 21, Pg. 963 2/20/89
LOT 10A REV. P.B. 21, Pg. 1022 6/2/89
LOT 18A, 18C REV. P.B. 22, Pg. 977 7/19/94
- ② HARBOR HILLS - P.B. 2, Pg. 171
LOT 12, 12A REV. P.B. 446, Pg. 398 5/18/93
- ③ HARBOR HILLS II, WILMAR COURT - D.B. 117, Pg. 193
- ④ J. STANLEY SHACKELFORD LOTS - P.B. 2, Pg. 389, &
D.B. 123, Pgs. 300 & 397
REVISED LOT 1-1B, PER P.B. 26, Pg. 24, 9/12/11
- ⑤ J. STANLEY SHACKELFORD LOTS - LOTS 10 & 11,
P.B. 3, Pg. 93
- ⑥ GLOUCESTER POINT LOTS - P.B. 6, Pg. 223
Revised Lots A & B, 3/20/03, P.B. 25-31
- ⑦ REVISION 4 PARCELS - HAYES - P.B. 7, Pg. 167
PARCEL D REV. P.B. 22, Pg. 977 7/19/94
- ⑧ J. STANLEY SHACKELFORD TRACTS - P.B. 11, Pg. 31
- ⑨ MACAND SUBDIVISION - SECTION C - P.D.B. 211, Pg. 223
- ⑩ MACAND SUBDIVISION - SECTIONS A, B, D, & E - P.B. 15, Pg. 30
- ⑪ VILLAGE POINTE - P.B. 22, Pg. 281, 4/3/91

REV. 1/63, 12/31/83/84/85/86/87/88/89/90/91/92/94/98/99/03/08/11
3/25/80 SCALE IN FEET



GLOUCESTER POINT DISTRICT

VIRGINIA STATE DEPARTMENT OF TAXATION, DIVISION OF REAL ESTATE APPRAISAL AND MAPPING

INSERT 50A