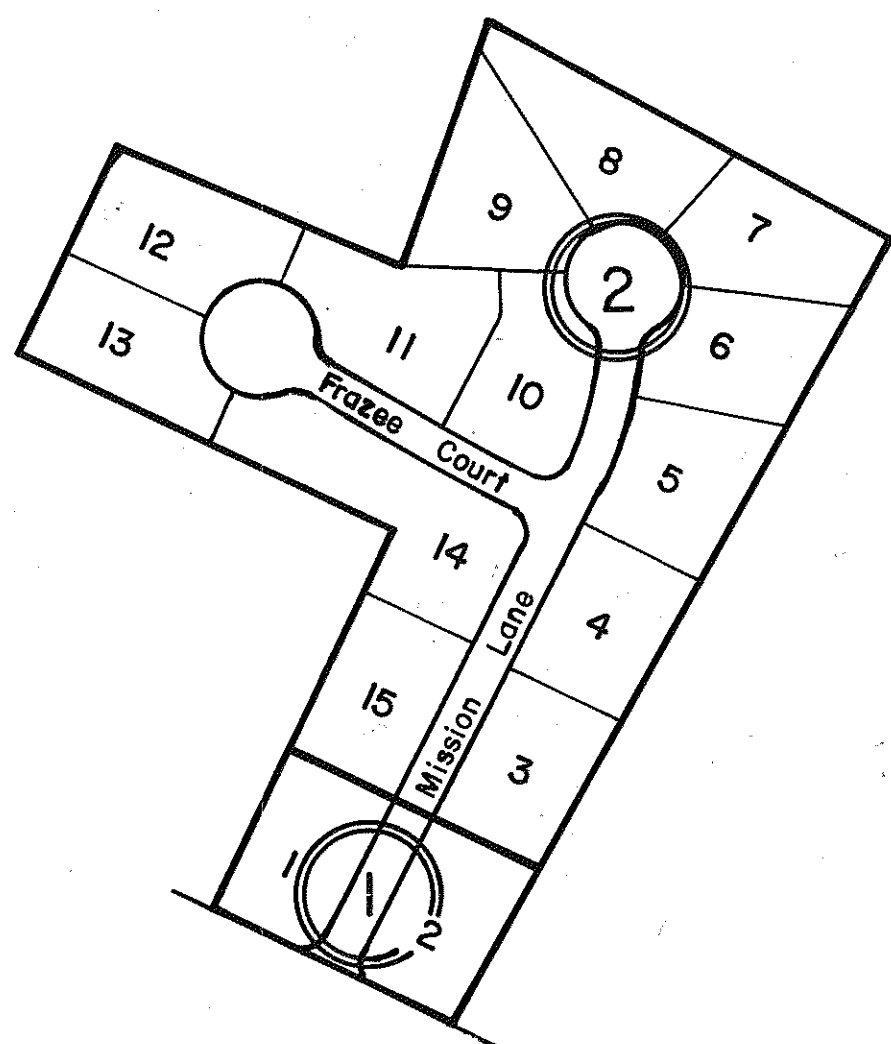
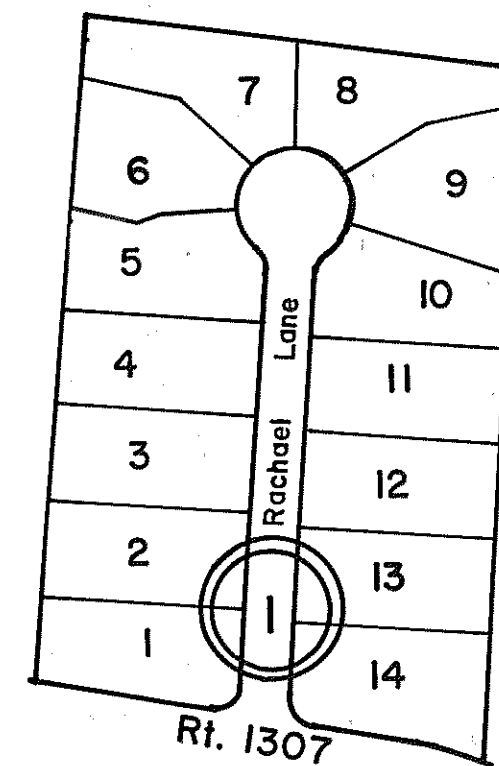


GLOUCESTER COUNTY



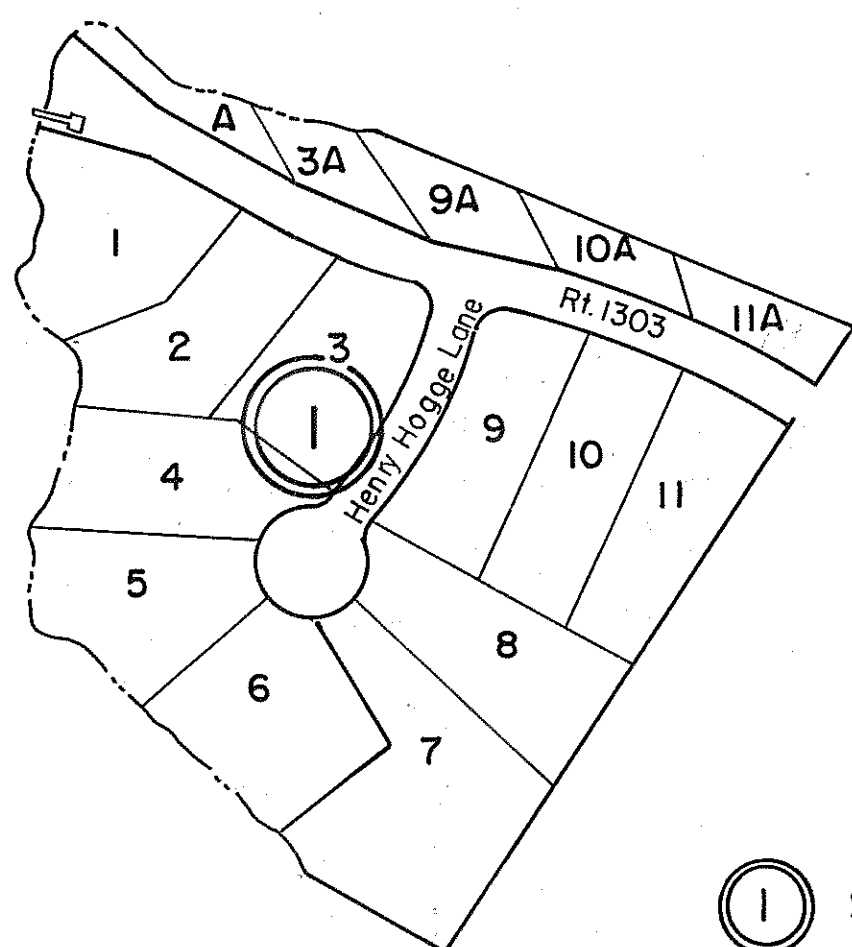
- ① POWHATAN MEADOWS-SEC. 1  
P.B. 22, Pg. 1122  
LOTS 1, 2 - 9/28/95
- ② POWHATAN MEADOWS-SEC. 2  
P.B. 23, Pg. 44  
LOTS 3-15 - 12/21/95

INSERT 45W



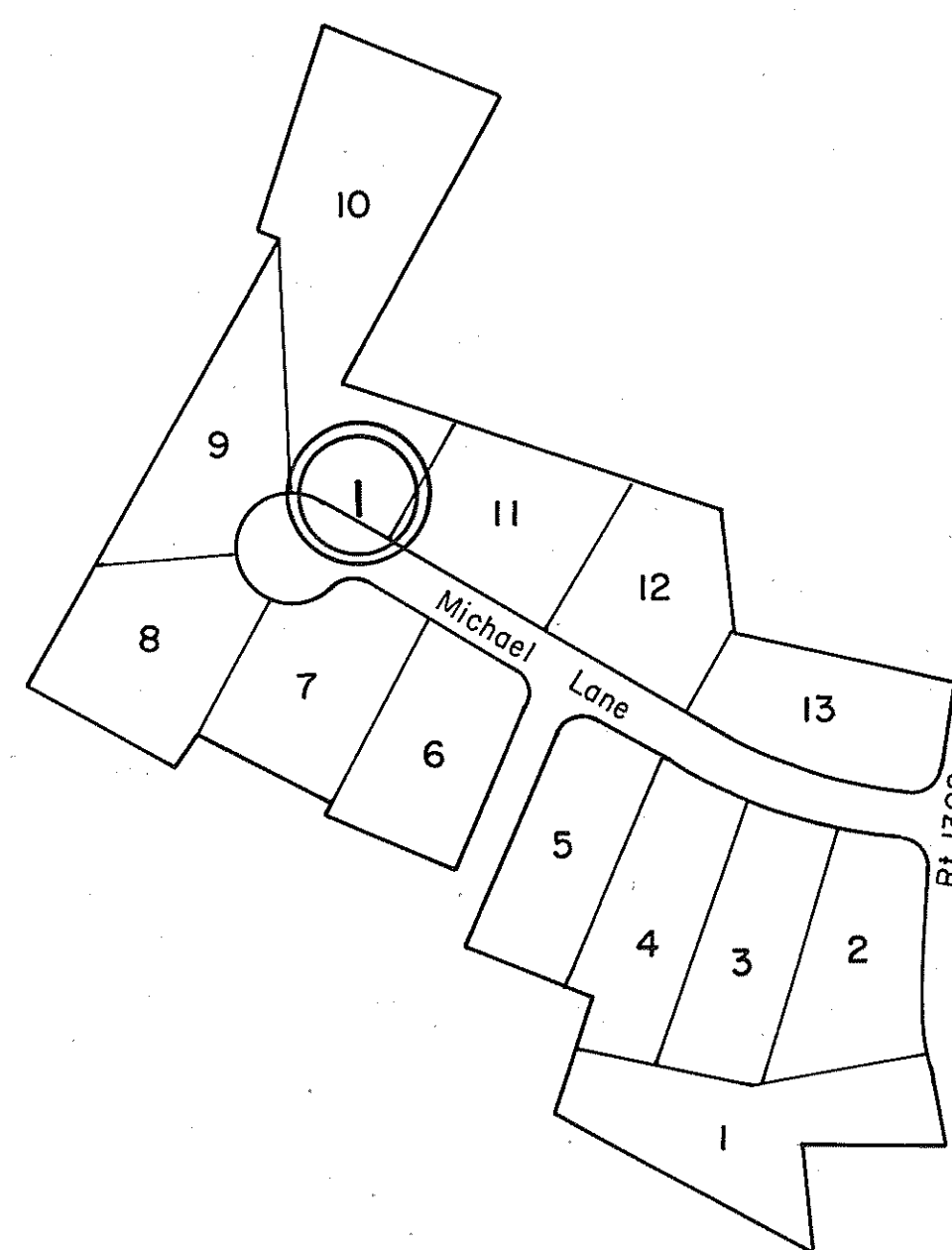
- ① HEATHER HEIGHTS  
LOTS 1-14  
P.B. 22, Pg. 818 - 10/4/93

INSERT 45V



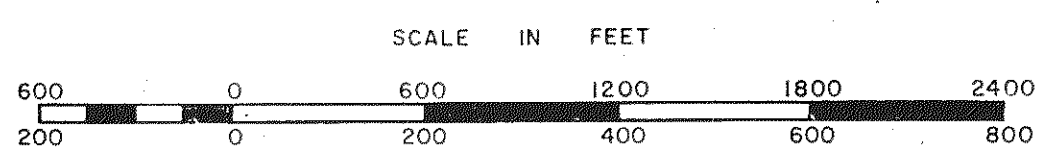
- ① SUNSET LANDING  
LOTS 1-11 & OUTLOTS A; 3A;  
9A; 10A; 11A  
P.B. 22, Pg. 104 6/8/90  
Revised Lots 6 & 7, P.B. 23-555 5/1/98

INSERT 45U



- ① ROSEWOOD  
LOTS 1-13  
P.B. 21, Pg. 827, 828 8/25/88

INSERT 45T



GLOUCESTER POINT DISTRICT

SECTION \_\_\_\_\_  
INSERT 45T,U,V,W