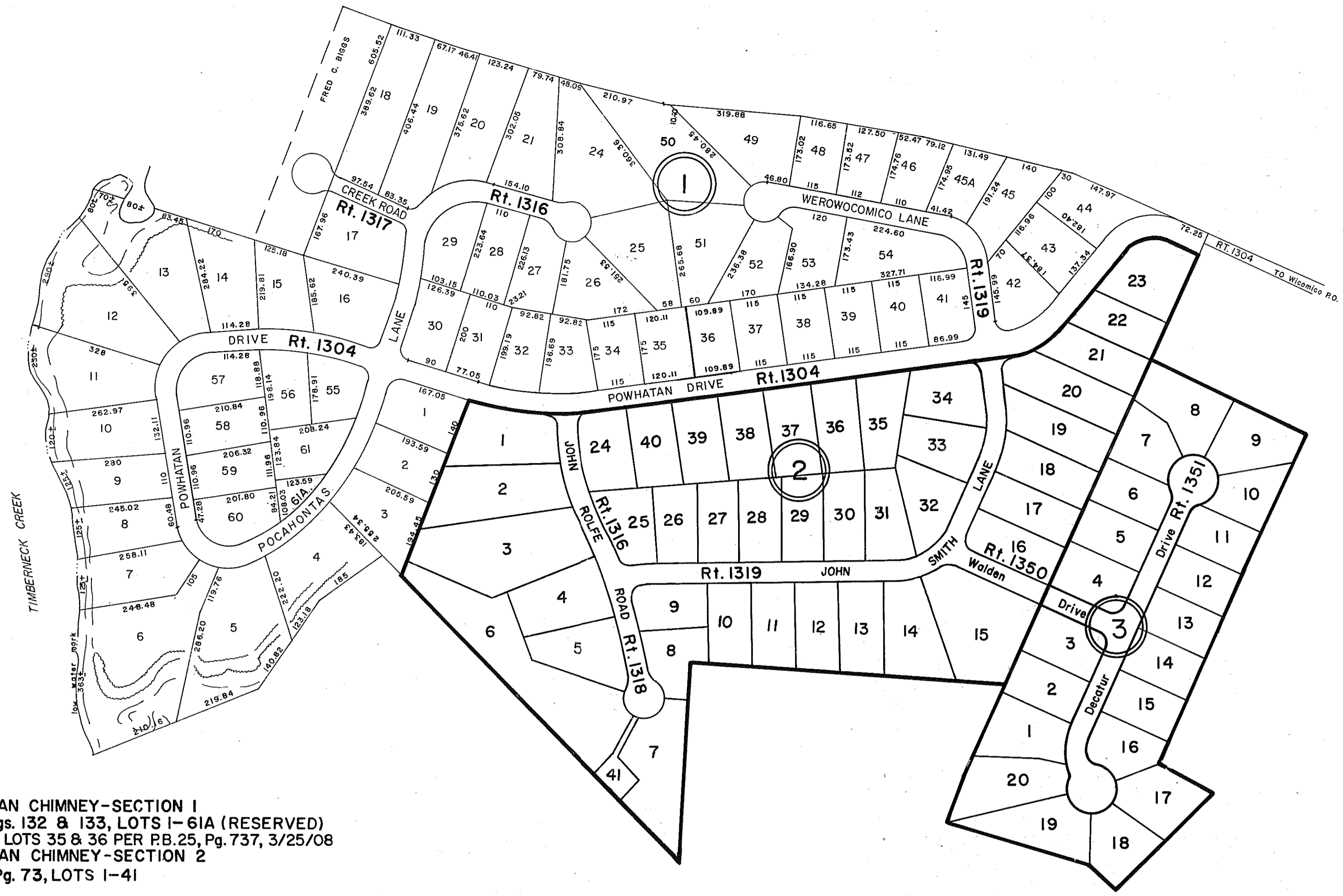


GLOUCESTER COUNTY

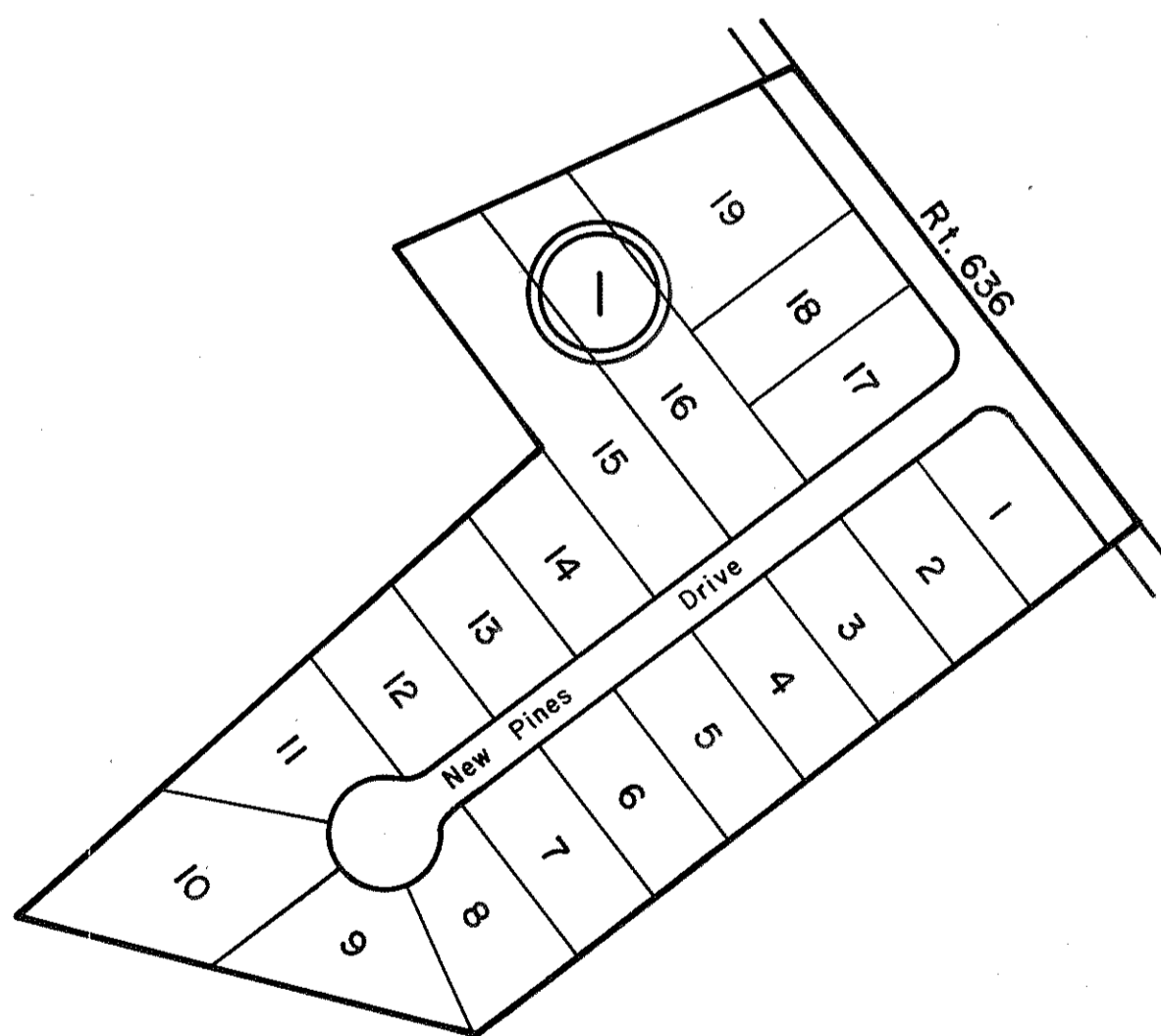


- ① POWHATAN CHIMNEY-SECTION 1
P.B. 11, Pgs. 132 & 133, LOTS 1-61A (RESERVED)
REVISED LOTS 35 & 36 PER P.B. 25, Pg. 737, 3/25/08
- ② POWHATAN CHIMNEY-SECTION 2
P. B. 13, Pg. 73, LOTS 1-41
- ③ POWHATAN CHIMNEY-SECTION 3
P. B. 20, Pgs. 748 & 748A, LOTS 1-20

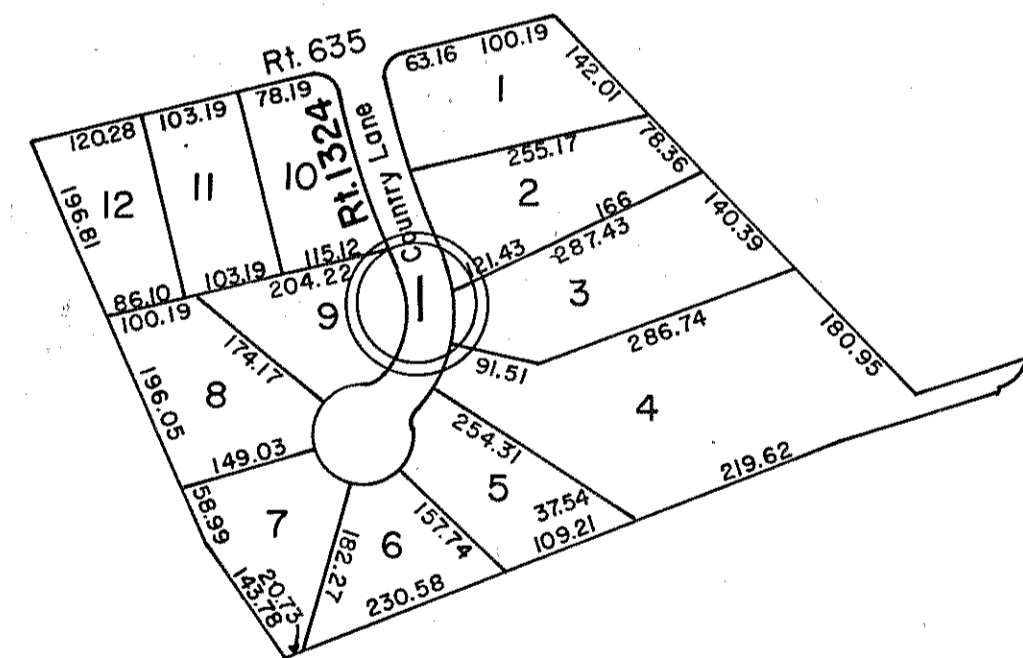
REV. 12/77/08

GLOUCESTER POINT DISTRICT

INSERT 45N



① NEW PINES OF TIMBERNECK - P.B. 20, Pg. 633



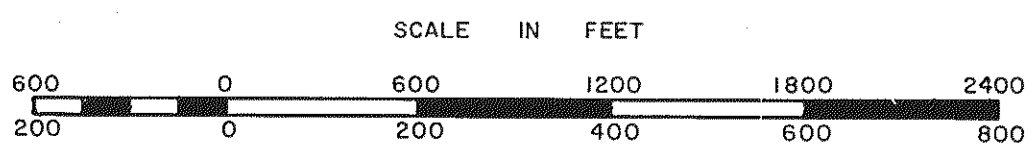
① COUNTRY VILLAGE
LOTS 1-12 P.B. 20-5

YORK DISTRICT

INSERT 45S

YORK DISTRICT

INSERT 45R



GLOUCESTER POINT
YORK DISTRICT

SECTION
INSERT 45N,R,S