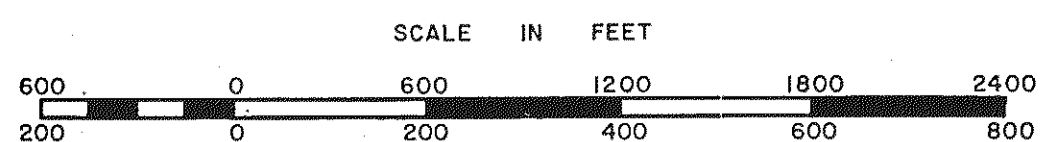
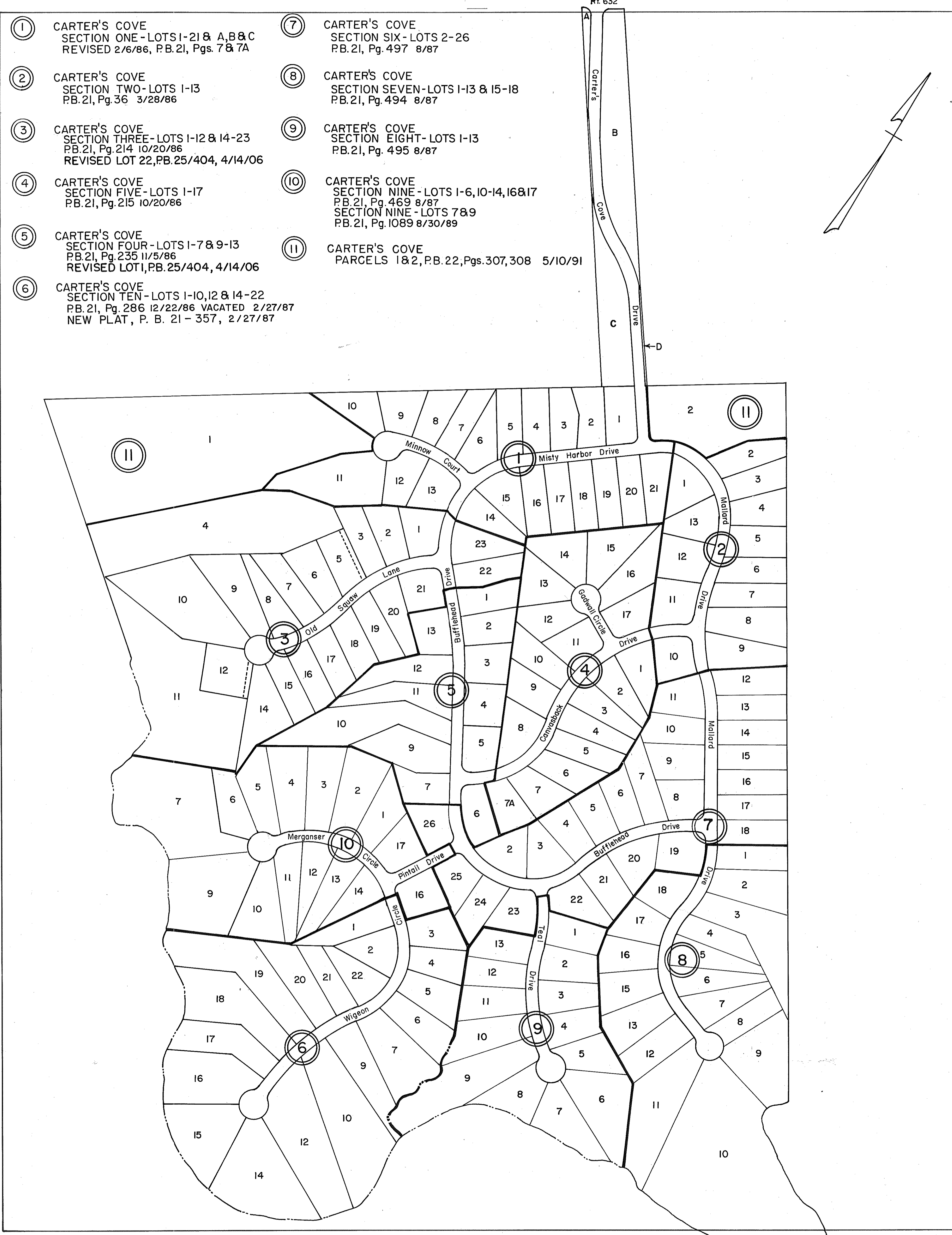


GLOUCESTER COUNTY

- ① CARTER'S COVE
SECTION ONE - LOTS 1-21 & A, B & C
REVISED 2/6/86, P.B. 21, Pgs. 7 & 7A
- ② CARTER'S COVE
SECTION TWO - LOTS 1-13
P.B. 21, Pg. 36 3/28/86
- ③ CARTER'S COVE
SECTION THREE - LOTS 1-12 & 14-23
P.B. 21, Pg. 214 10/20/86
REVISED LOT 22, P.B. 25/404, 4/14/06
- ④ CARTER'S COVE
SECTION FIVE - LOTS 1-17
P.B. 21, Pg. 215 10/20/86
- ⑤ CARTER'S COVE
SECTION FOUR - LOTS 1-7 & 9-13
P.B. 21, Pg. 235 11/5/86
REVISED LOT 1, P.B. 25/404, 4/14/06
- ⑥ CARTER'S COVE
SECTION TEN - LOTS 1-10, 12 & 14-22
P.B. 21, Pg. 286 12/22/86 VACATED 2/27/87
NEW PLAT, P. B. 21 - 357, 2/27/87

- ⑦ CARTER'S COVE
SECTION SIX - LOTS 2-26
P.B. 21, Pg. 497 8/87
- ⑧ CARTER'S COVE
SECTION SEVEN - LOTS 1-13 & 15-18
P.B. 21, Pg. 494 8/87
- ⑨ CARTER'S COVE
SECTION EIGHT - LOTS 1-13
P.B. 21, Pg. 495 8/87
- ⑩ CARTER'S COVE
SECTION NINE - LOTS 1-6, 10-14, 16 & 17
P.B. 21, Pg. 469 8/87
SECTION NINE - LOTS 7 & 9
P.B. 21, Pg. 1089 8/30/89
- ⑪ CARTER'S COVE
PARCELS 1 & 2, P.B. 22, Pgs. 307, 308 5/10/91



ABINGDON DISTRICT

SECTION
INSERT **38J**