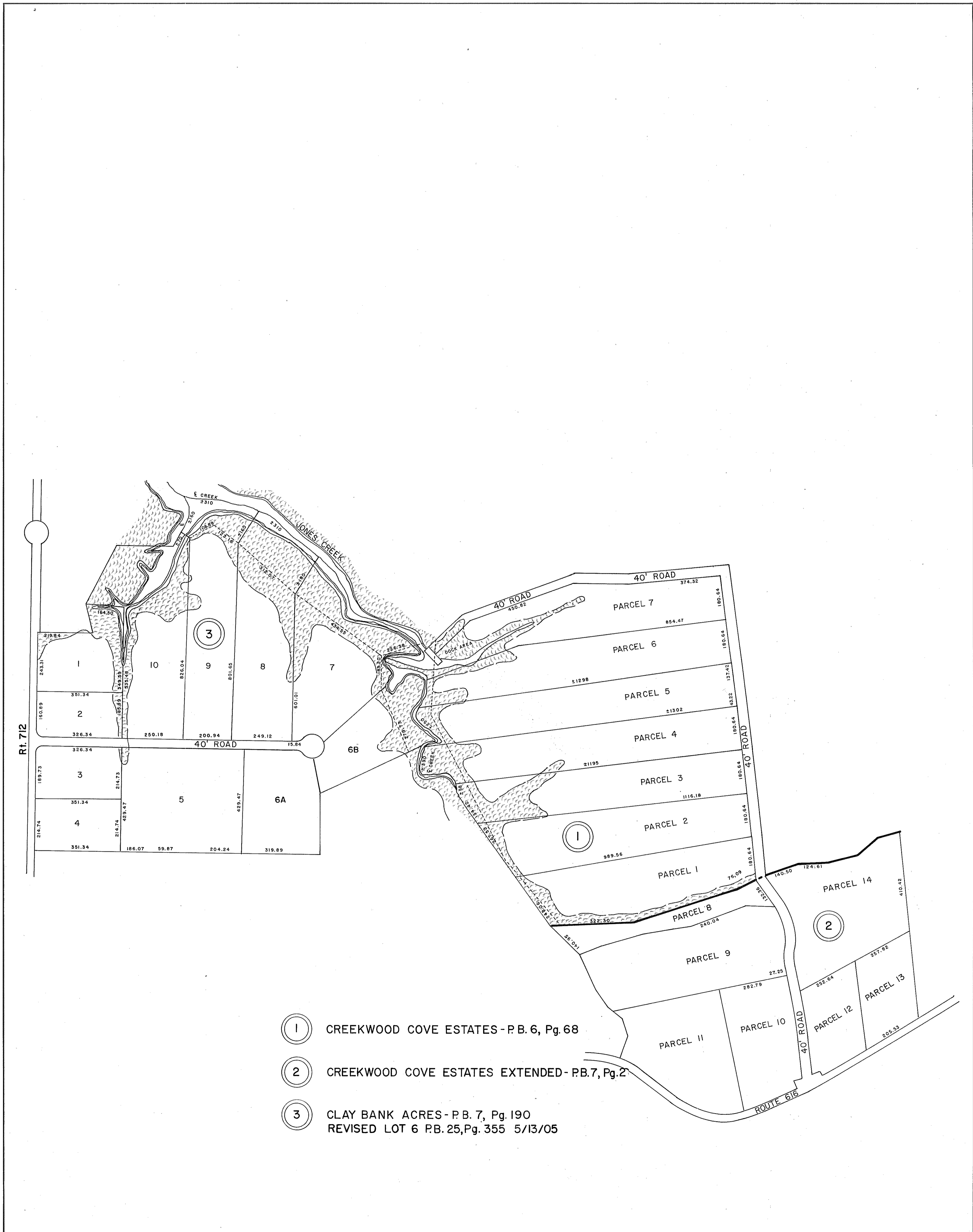
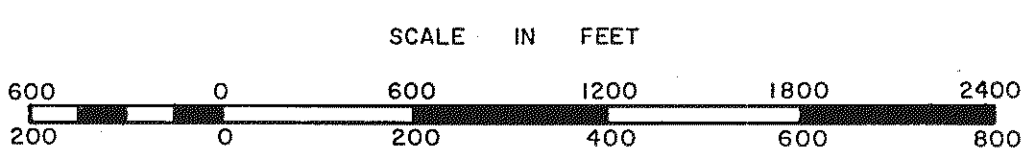


GLOUCESTER COUNTY



- ① CREEKWOOD COVE ESTATES - P.B. 6, Pg. 68
- ② CREEKWOOD COVE ESTATES EXTENDED - P.B. 7, Pg. 2
- ③ CLAY BANK ACRES - P.B. 7, Pg. 190
REVISED LOT 6 P.B. 25, Pg. 355 5/13/05



ABINGDON DISTRICT

SECTION INSERT 37H