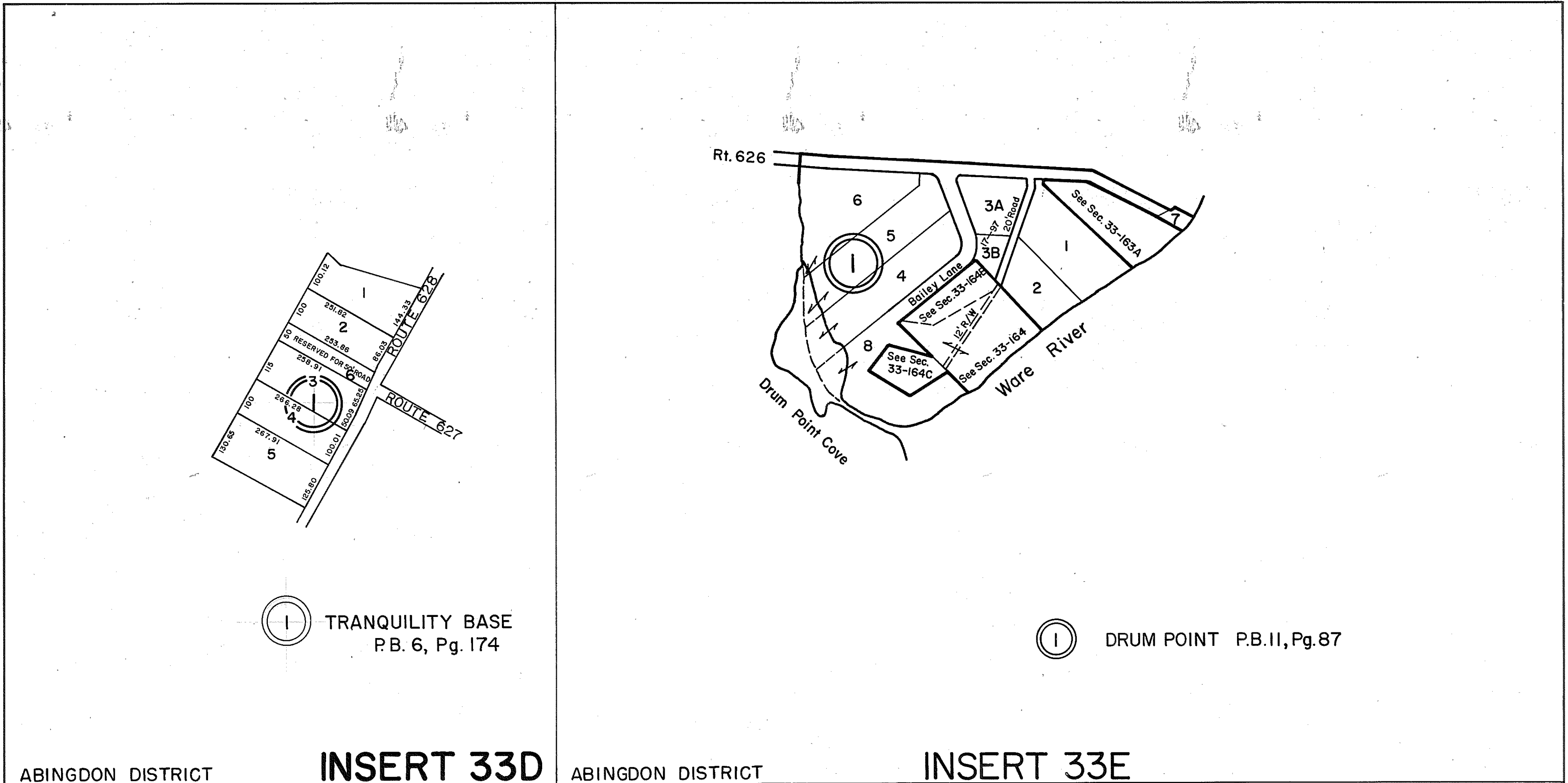
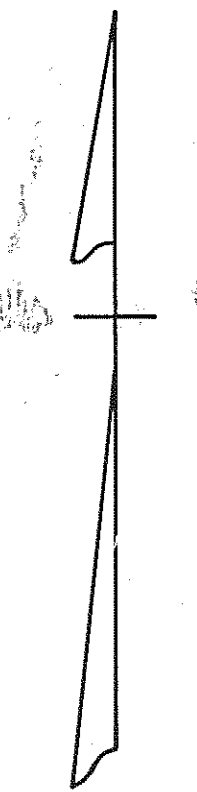


GLOUCESTER COUNTY

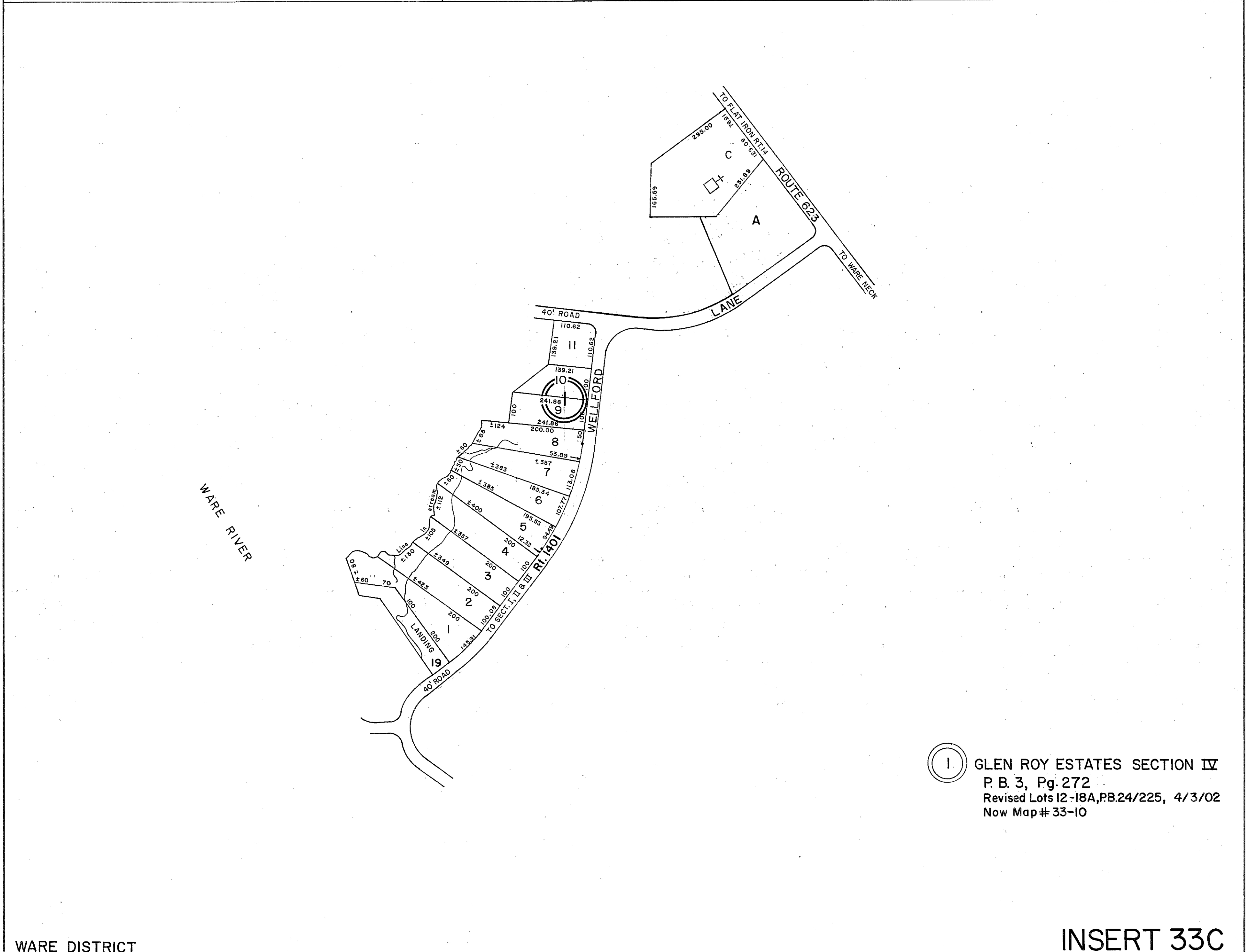


ABINGDON DISTRICT

INSERT 33D

ABINGDON DISTRICT

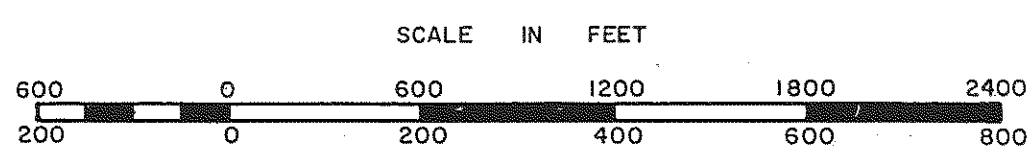
INSERT 33E



WARE DISTRICT

① GLEN ROY ESTATES SECTION IV
P. B. 3, Pg. 272
Revised Lots 12-18A, P.B. 24/225, 4/3/02
Now Map # 33-10

INSERT 33C



ABINGDON & WARE DISTRICT

SECTION _____
INSERT **33C, 33D, 33E**