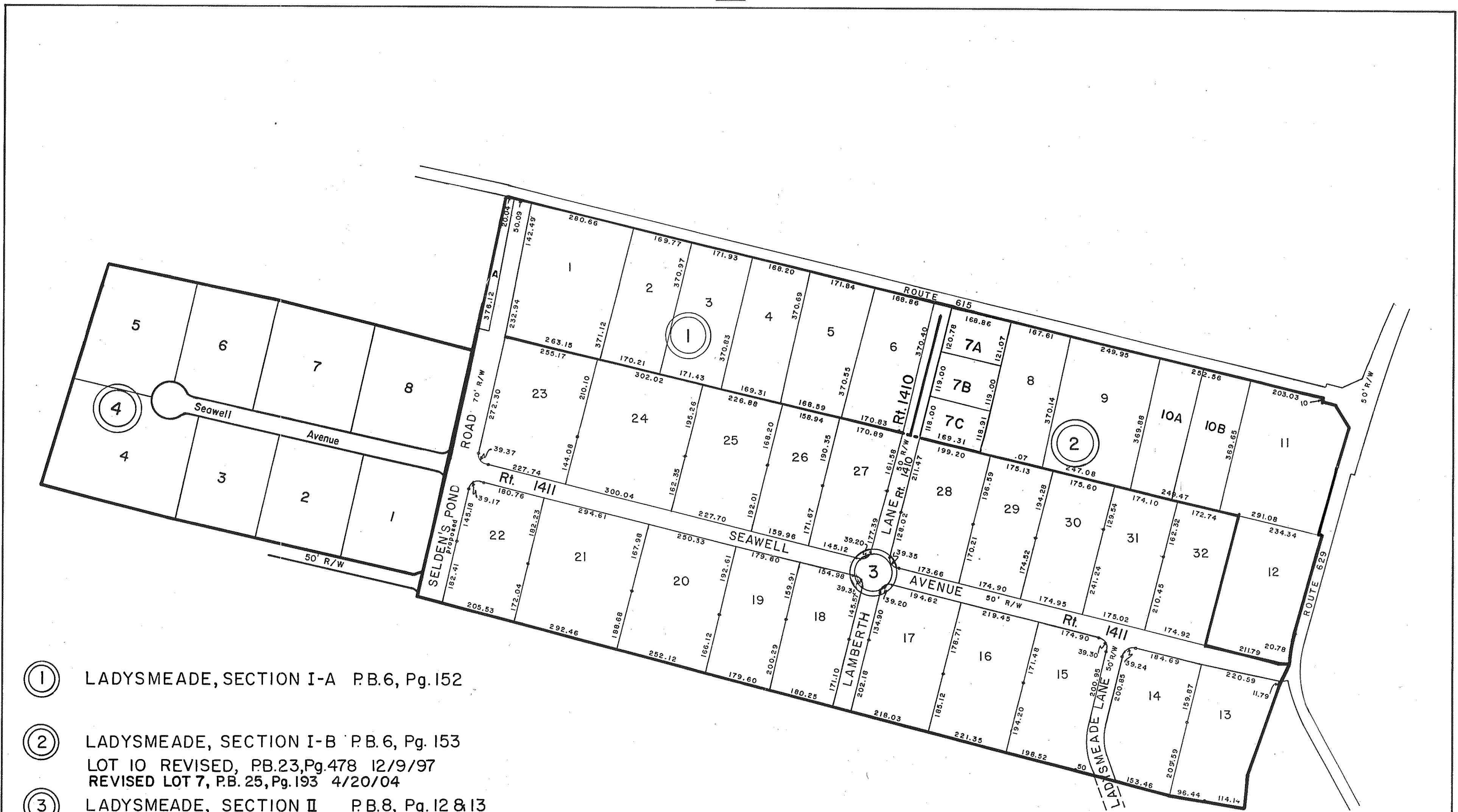


GLOUCESTER COUNTY

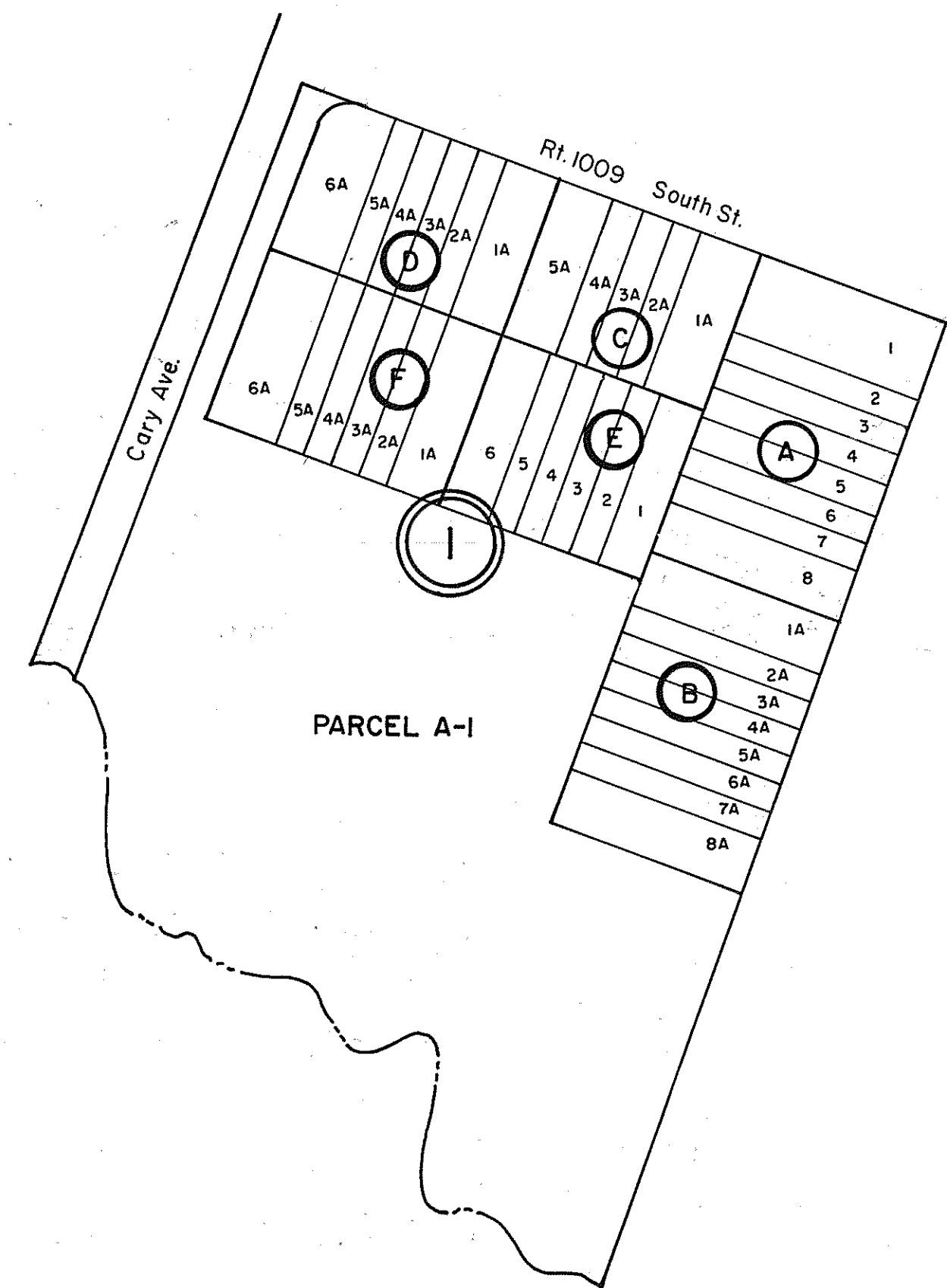


- ① LADYSMEADE, SECTION I-A P.B.6, Pg. 152
- ② LADYSMEADE, SECTION I-B P.B.6, Pg. 153
LOT 10 REVISED, P.B.23, Pg.478 12/9/97
REVISED LOT 7, P.B. 25, Pg. 193 4/20/04
- ③ LADYSMEADE, SECTION II P.B.8, Pg. 12 & 13
- ④ LADYSMEADE, SECTION VI P.B. 13-29

SCALE 1" = 200'

ABINGDON DISTRICT

INSERT 32E

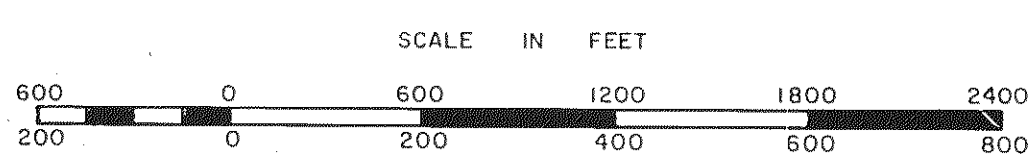


- ① VILLAGE WOODS
P.B. 20, Pg. 725 8/2/84
REVISED P.B. 21, Pg. 1068 8/3/89
BLOCKS B, C, D, F

SCALE 1" = 100'

WARE DISTRICT

INSERT 32J



ABINGDON & WARE DISTRICTS

SECTION INSERT 32 E, J