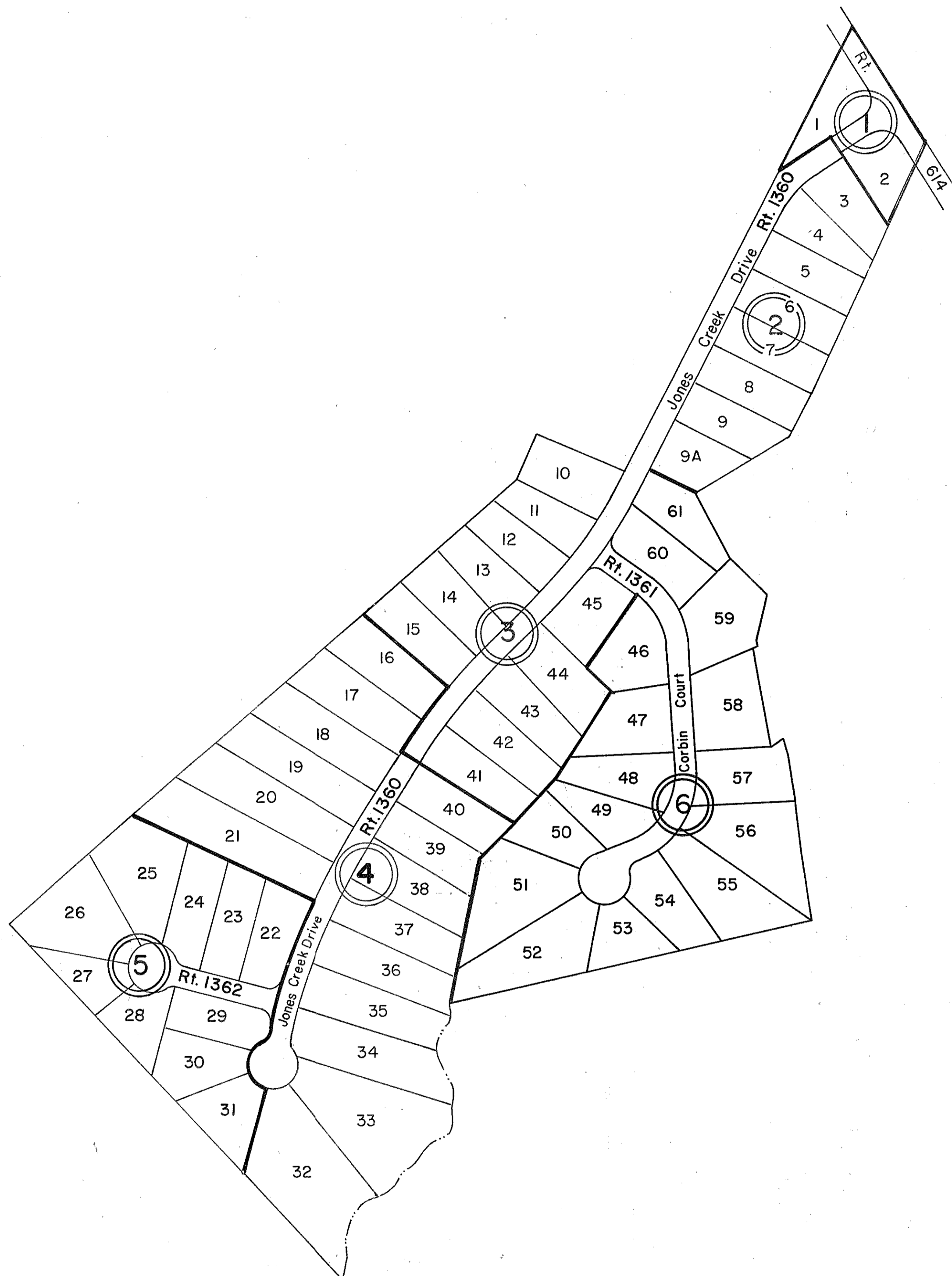
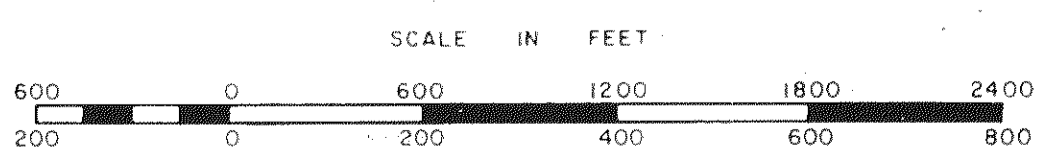


GLOUCESTER COUNTY



- ① VILLAGE KNOLL - SECTION ONE- LOTS 1&2, P.B. 20, Pg. 723
- ② VILLAGE KNOLL - SECTION TWO- LOTS 3-9A, P.B. 20, Pg. 843 12/10/84
- ③ VILLAGE KNOLL - SECTION THREE- LOTS 10-15 & 41-45, P.B. 20, Pg. 946  
4/18/85
- ④ VILLAGE KNOLL - SECTION THREE- LOTS 16-21 & 32-40, P.B. 20, Pg. 1017  
7/17/85
- ⑤ VILLAGE KNOLL - SECTION THREE - LOTS 22-31, P.B. 20, Pg. 1164 1/9/86
- ⑥ VILLAGE KNOLL - SECTION FOUR - LOTS 46-61, P.B. 21, Pg. 190 10/1/86

REV 12/86/89/91/92



ABINGDON DISTRICT

SECTION  
INSERT 30D

REVISED: