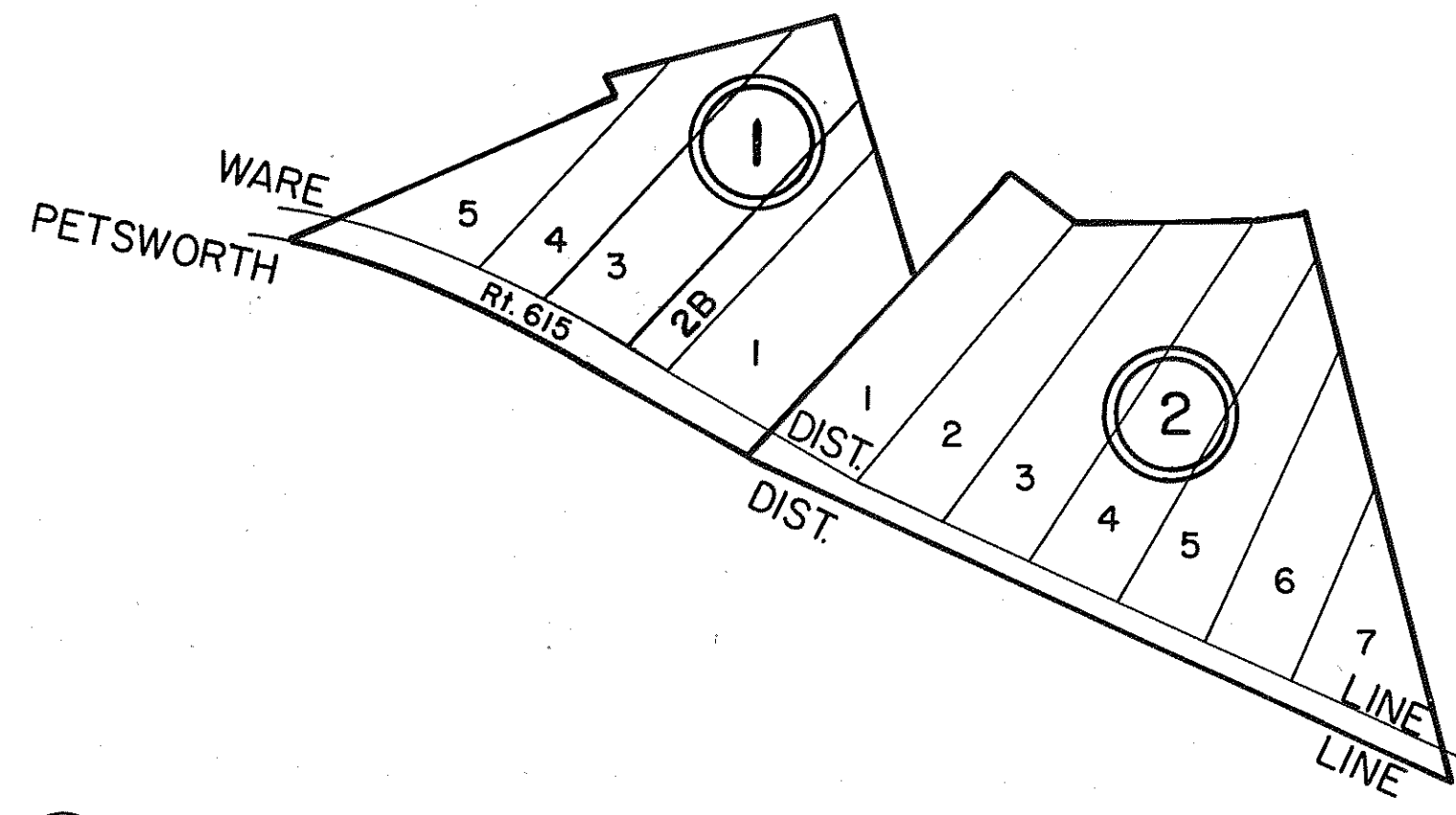
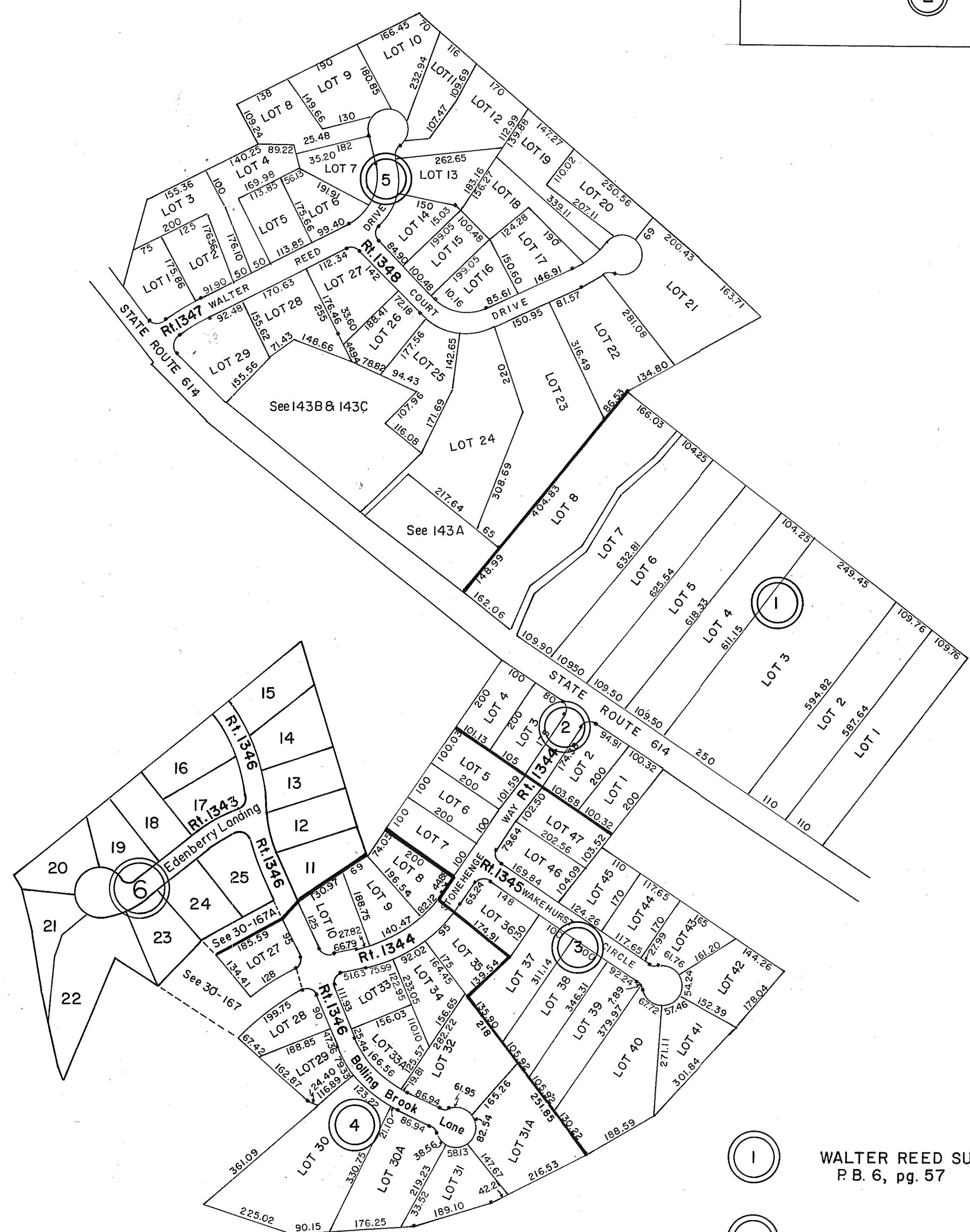


GLOUCESTER COUNTY



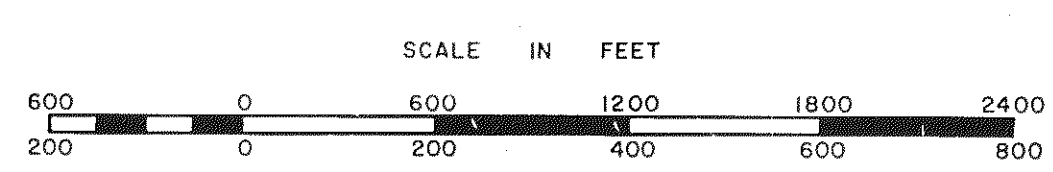
- ① BRUNK & SHENK SUBDIVISION - P.B. 3, Pg. 288
Revised Lots 2A & 3, D/O 030976, 2/4/03
- ② SASSAFRAS SUBDIVISION - P.B. 14, Pg. 83

WARE DISTRICT **INSERT 30A**



- ① WALTER REED SUBDIVISION
P.B. 6, pg. 57
- ② STONEHENGE SECTION I
P.B. 16, pg. 133
LOTS 1, 2, 3, 4
- ③ STONEHENGE SECTION II
P.B. 17, pg. 86
LOTS 5, 6, 7, & 36-47
- ④ STONEHENGE SECTION III
P.B. 19, pg. 90
LOTS 8, 9, 10 & 27-35
REDIVISION LOTS 31A, 32 P.D.B. 342/325 2/2/88
- ⑤ BELROI VILLAGE
P.B. 20, pgs. 348 & 349
LOTS 1-29
- ⑥ STONEHENGE SECTION FOUR
P.B. 20, Pg. 789 LOTS 11-25
10-5-84
REDIVISION LOTS 21 & 22
P.B. 20, Pg. 1008 7-1-85

INSERT 30B



ABINGDON DISTRICT

SECTION 30A,B
INSERT