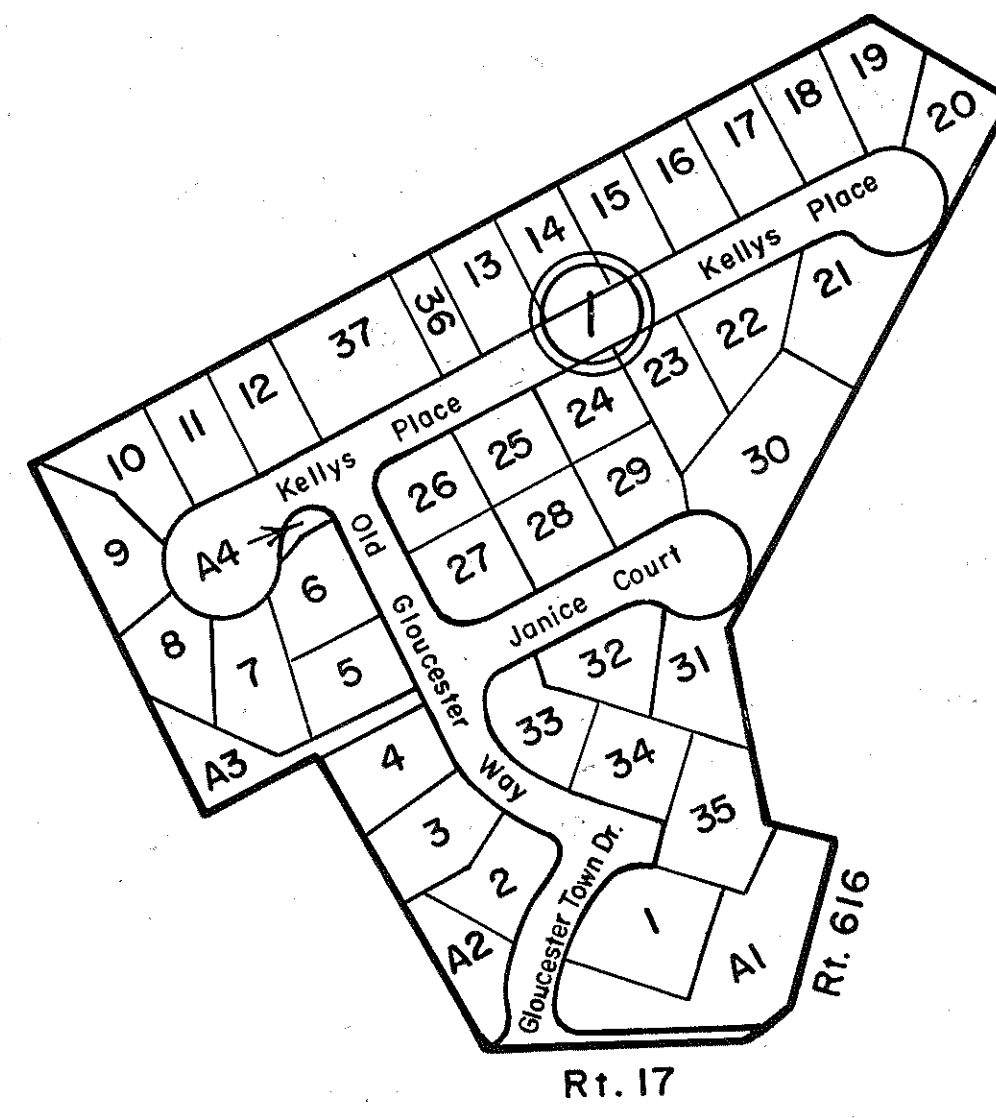
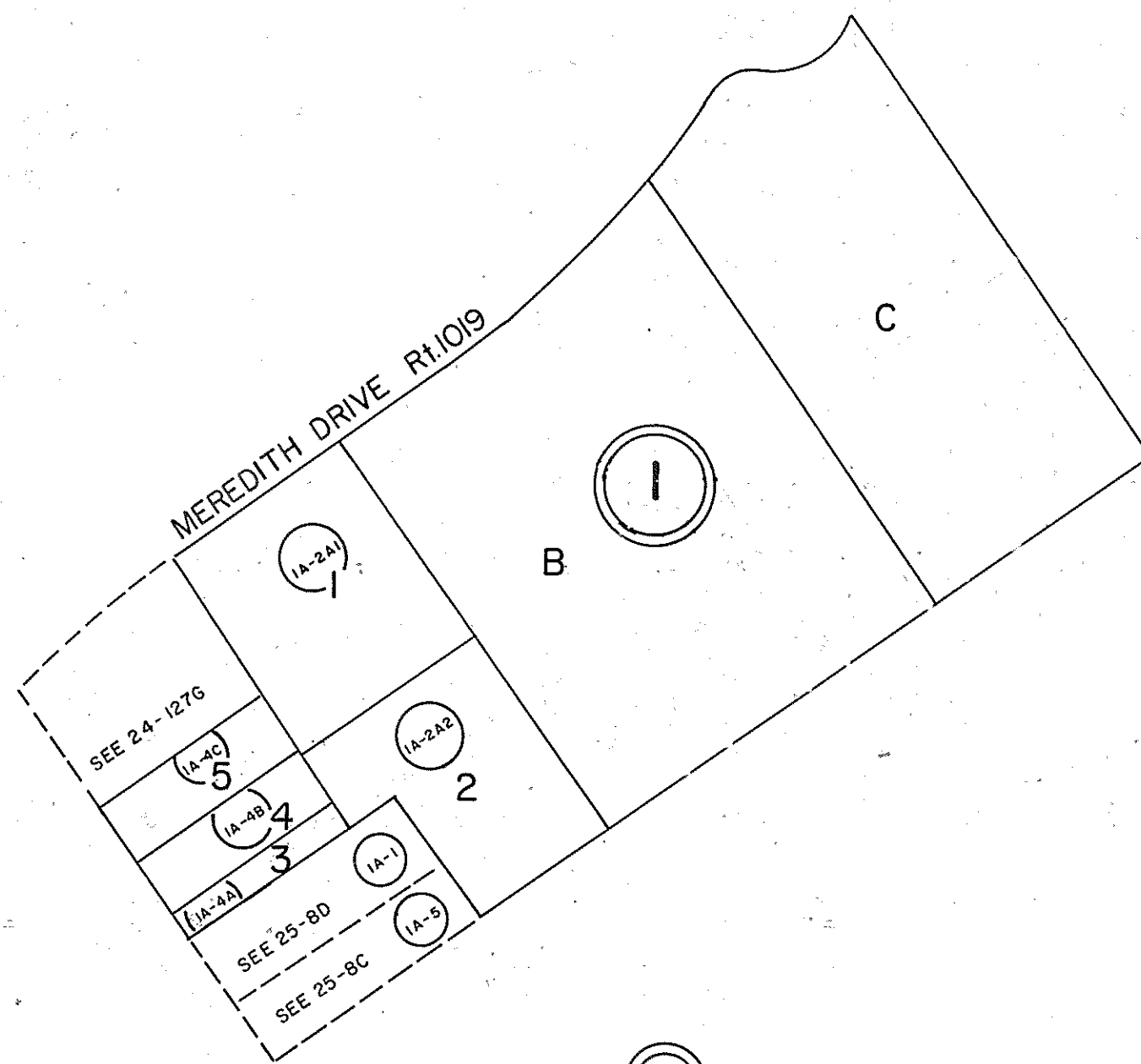


GLOUCESTER COUNTY



① GLOUCESTER TOWN COMMONS  
Lots 1-35, PB 25, Pgs. 402-402B 9/7/05

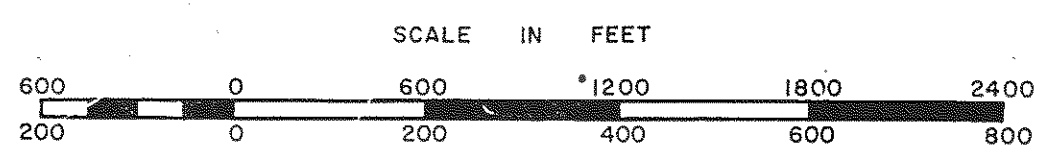
INSERT 25L



① CORR PLAT  
15 LOTS PB 20, Pg. 1014  
7/9/85  
LOTS 6-15 REVISED  
INTO PARCELS B & C  
PB. 21, Pg. 904 12/27/88

INSERT 25J

1" = 100'



WARE \_\_\_\_\_  
DISTRICT \_\_\_\_\_

SECTION \_\_\_\_\_  
INSERT 25J,L