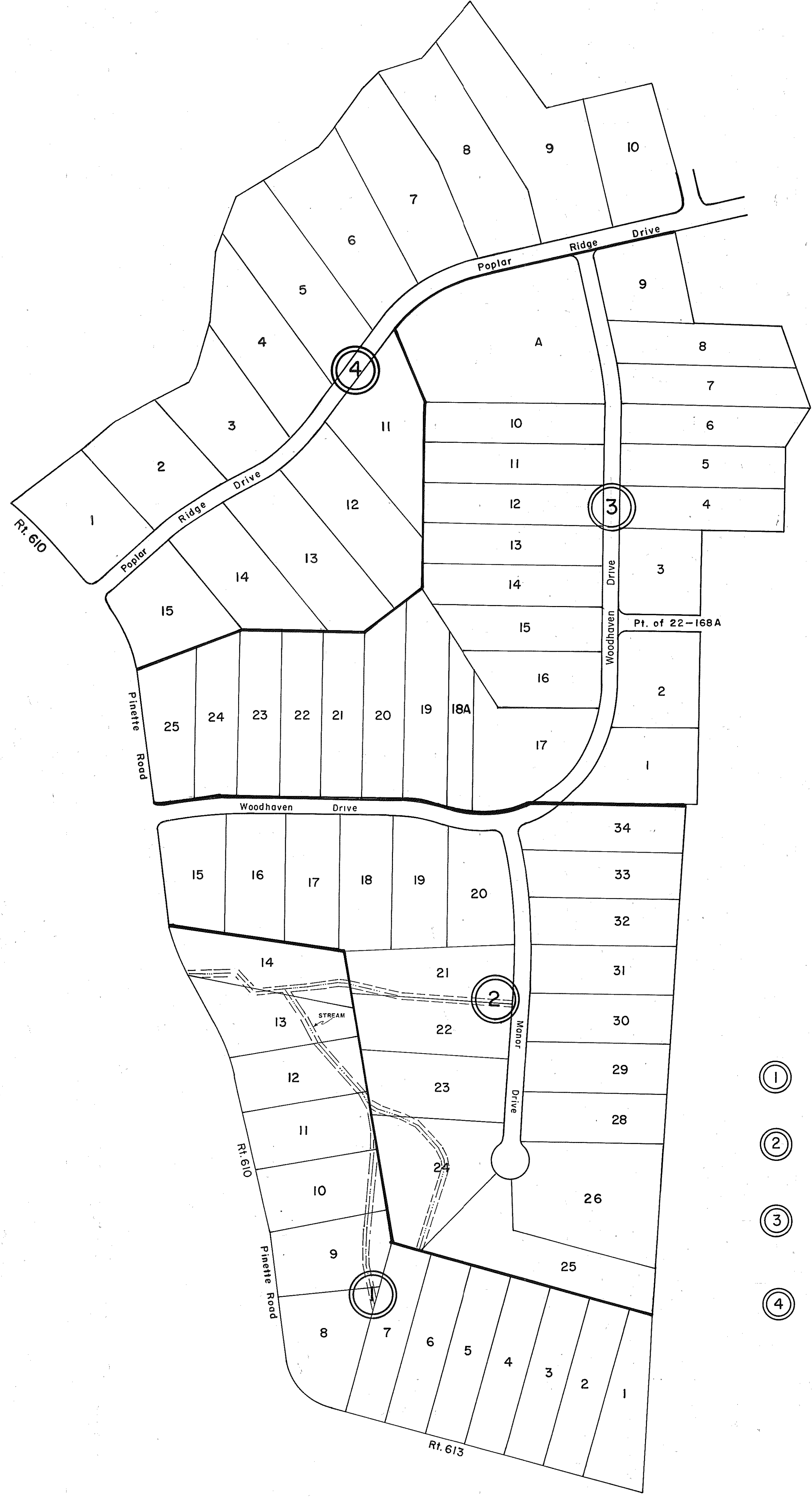
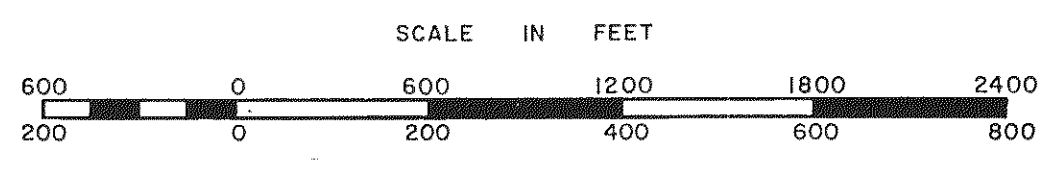


GLOUCESTER COUNTY



- ① PINE MILL
SEC. ONE, LOTS 1-14
P.B. 21, Pg. 367 3/12/87
- ② PINE MILL
SEC. TWO, LOTS 15-34
P.B. 21, Pg. 507 8/21/87
P.B. 21, Pg. 579 10/30/87
REVISED LOTS 27 & 28, VACATED LINE BETWEEN LOTS
1/983492; 6/11/98, NOW LOT 26
- ③ PINE MILL
SEC. THREE, LOTS 1-25 & REC. AREA
P.B. 21, Pg. 799 & 800, 7/25/88
LOTS 17, 18, 19 REVISED-P.B. 22, Pg. 797
9/3/93
LOTS 17, 18B REVISED-P.B. 25, Pg. 935 1/8/10
- ④ PINE MILL
SEC. FIVE, LOTS 1-15 & LOTA (Road)
P.B. 25, Pgs. 237-239, 7/2/04

REVISED 12/87, 12/88/92/93/98/01/04/10



PETSWORTH
DISTRICT

SECTION
INSERT **22E**