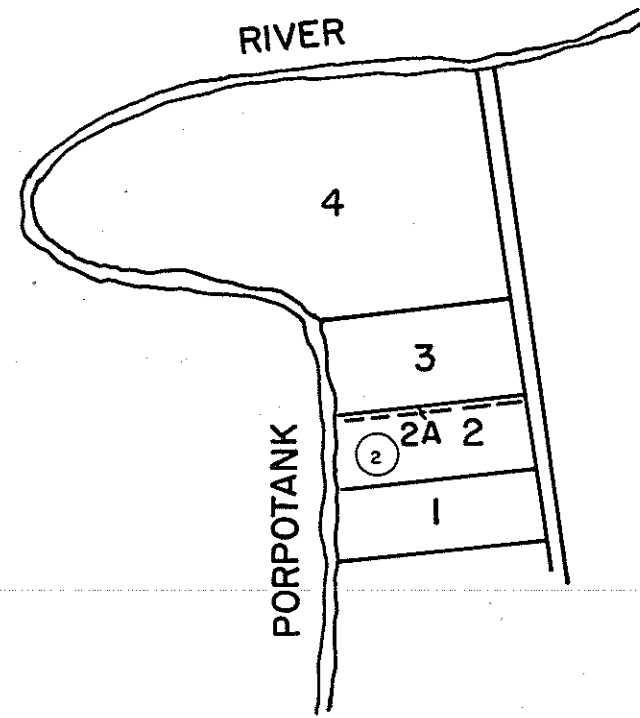
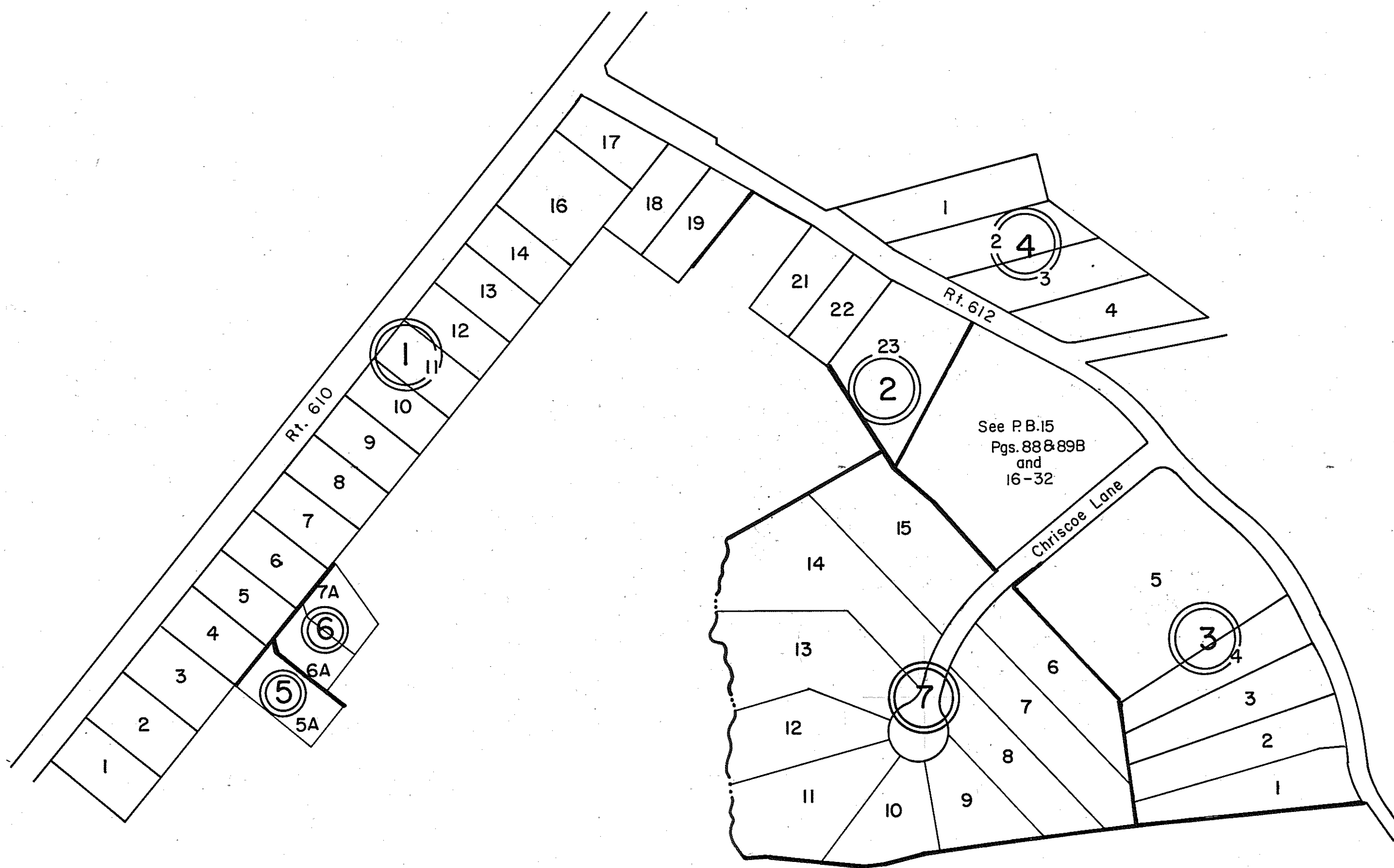


GLOUCESTER COUNTY



① WOODSTOCK FARM PLAT
P.D.B. 108, Pg. 18

INSERT 15A

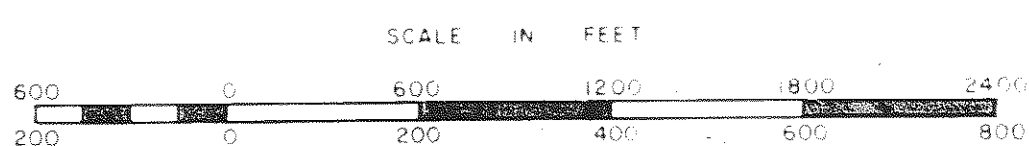


⑦ HOLLY OAKS SUBDIVISION
SEC. 2 LOTS 6-15
P.B. 21, Pg. 911 1/9/89

- ① HOLLY OAKS SUBDIVISION
P.B. 6, Pg. 122 LOTS 1-19 & P.B. 20, Pg. 282
Revised LOTS 15 & 16 ID/024538, 6/27/02
Revised LOTS 15 & 16 per ID/1600412, 2/1/16
- ② HOLLY OAKS SUBDIVISION
EXTENDED P.B. 6, Pg. 237
LOTS 21-23
- ③ HOLLY OAKS SUBDIVISION
P.B. 21, Pg. 176, LOTS 1-5 9/86
Revised Lots 182, ID/092207 w/Plat, 4/22/09
- ④ HOLLY OAKS SUBDIVISION, Sec. 3
P.B. 21, Pg. 196, LOTS 1-4 10/6/86
- ⑤ F.R. & L.B. CHRISCOE SUBDIVISION
PARCEL 5A; P.B. 21, Pg. 397 4/87
- ⑥ F.R. & L.B. CHRISCOE SUBDIVISION
PARCELS 6A & 7A, P.B. 21, Pg. 618 12/87

INSERT 15B

REV. 12/86/87/89/92/02/06/09/16



PETSWORTH DISTRICT

SECTION 15A, B
INSERT 15A, B