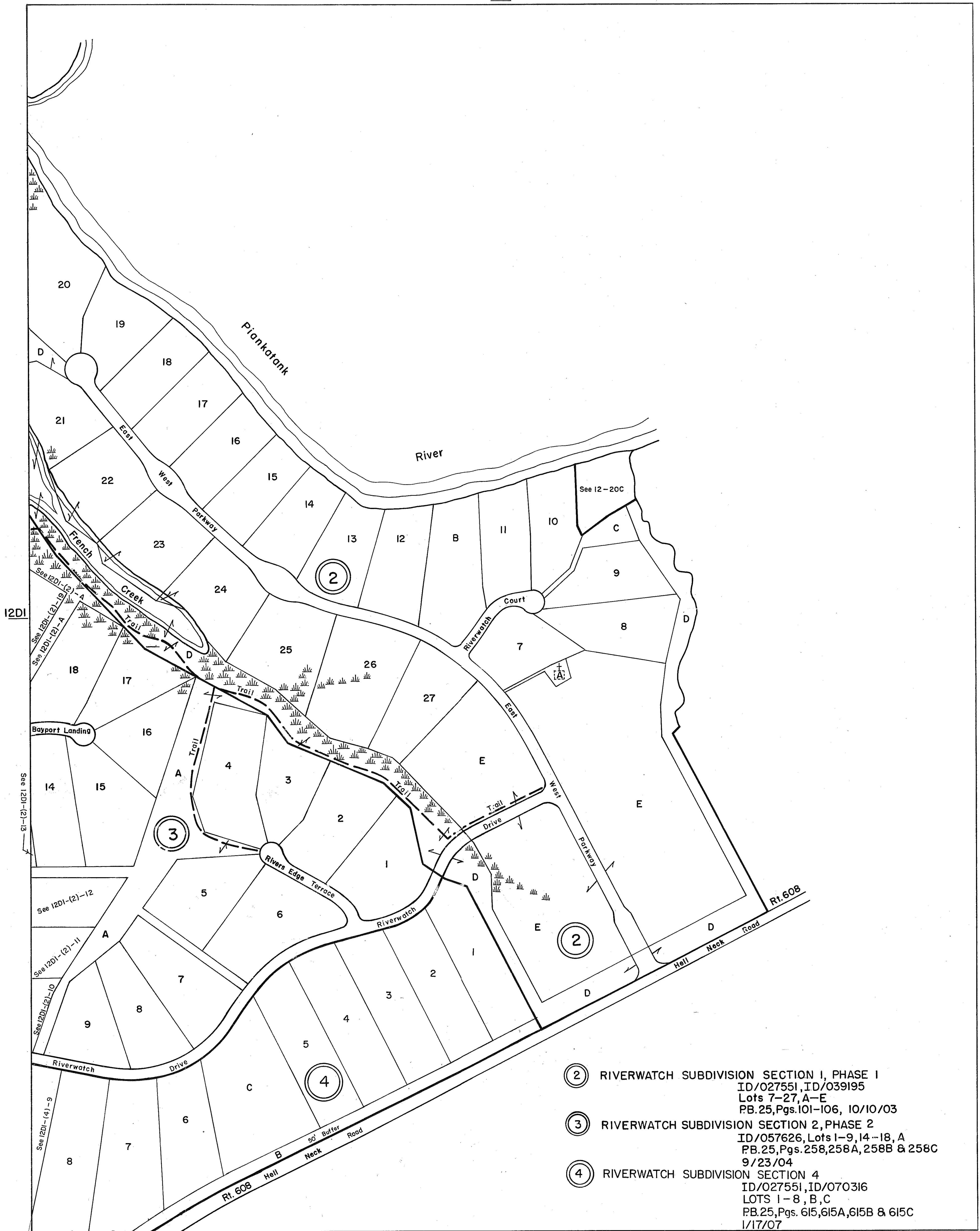


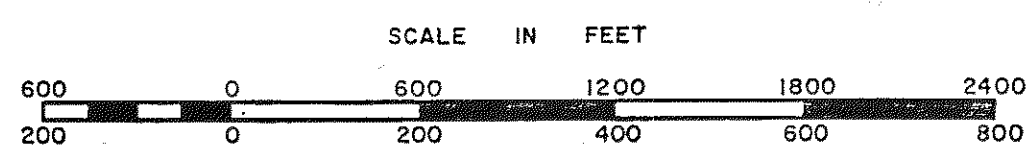
GLOUCESTER COUNTY

NONE



NONE

- ② RIVERWATCH SUBDIVISION SECTION 1, PHASE 1  
ID/027551, ID/039195  
Lots 7-27, A-E  
PB.25, Pgs. 101-106, 10/10/03
- ③ RIVERWATCH SUBDIVISION SECTION 2, PHASE 2  
ID/057626, Lots 1-9, 14-18, A  
PB.25, Pgs. 258, 258A, 258B & 258C  
9/23/04
- ④ RIVERWATCH SUBDIVISION SECTION 4  
ID/027551, ID/070316  
LOTS 1-8, B, C  
PB.25, Pgs. 615, 615A, 615B & 615C  
1/17/07



12D4

PETSWORTH DISTRICT

SECTION 12D2  
INSERT