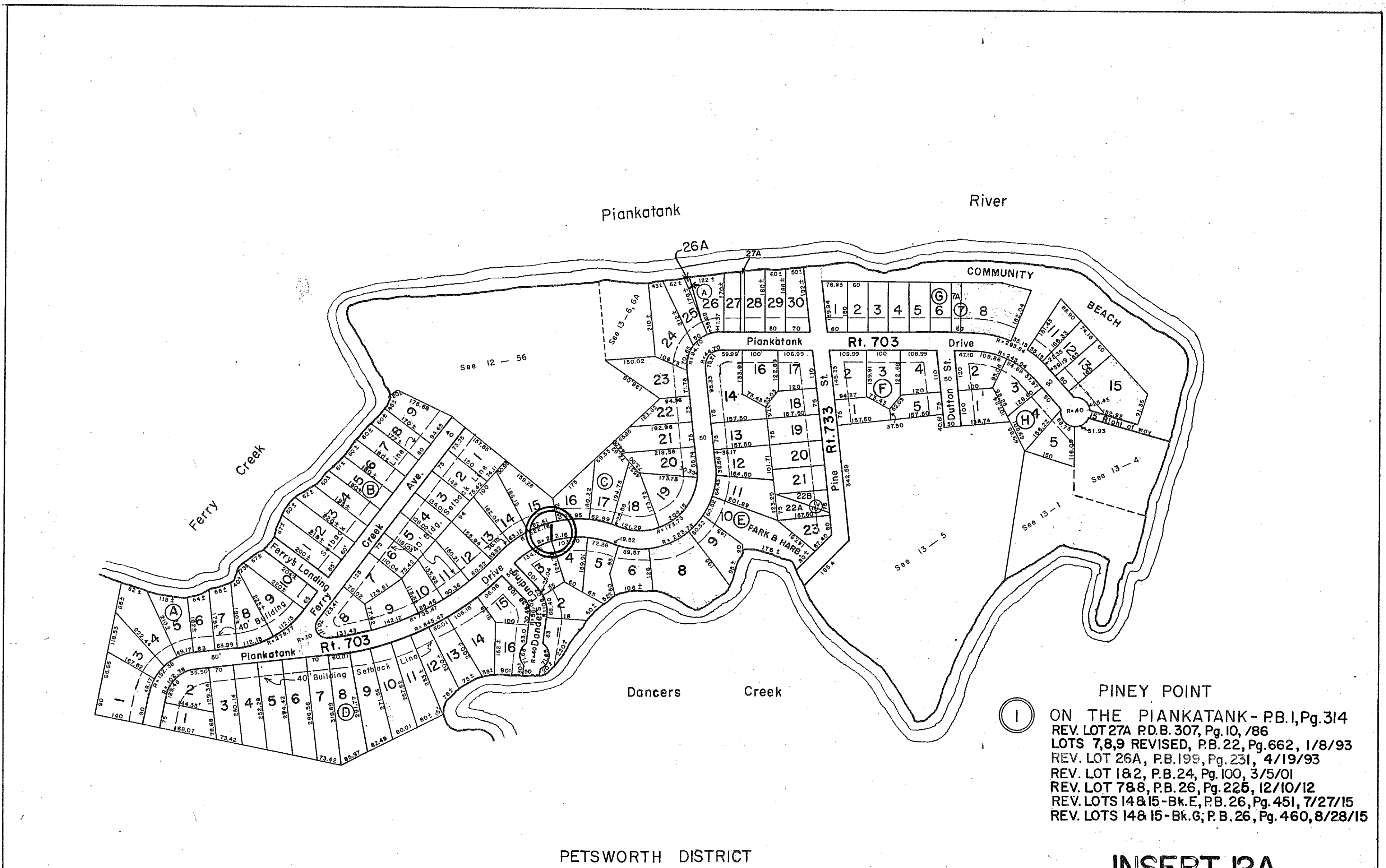


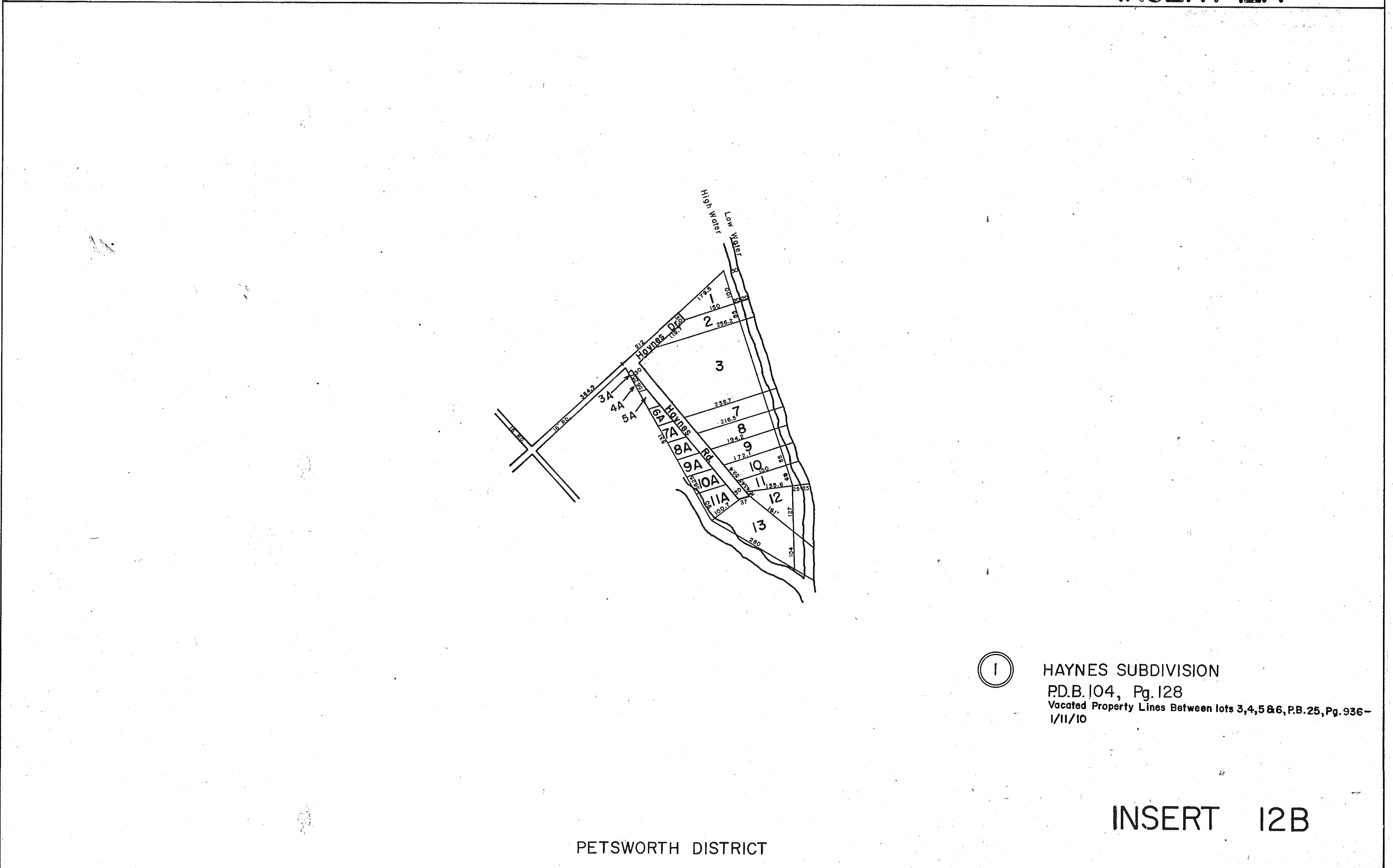
GLOUCESTER COUNTY



① PINEY POINT
 ON THE PIANKATANK - P.B. I, Pg. 314
 REV. LOT 27A P.D.B. 307, Pg. 10, /86
 LOTS 7,8,9 REVISED, P.B. 22, Pg. 662, 1/8/93
 REV. LOT 26A, P.B. 199, Pg. 231, 4/19/93
 REV. LOT 18 & 2, P.B. 24, Pg. 100, 3/5/01
 REV. LOT 7 & 8, P.B. 26, Pg. 225, 12/10/12
 REV. LOTS 14 & 15 - Bk. E, P.B. 26, Pg. 451, 7/27/15
 REV. LOTS 14 & 15 - Bk. G, P.B. 26, Pg. 460, 8/28/15

PETSWORTH DISTRICT

INSERT 12A



① HAYNES SUBDIVISION
 P.D.B. 104, Pg. 128
 Vacated Property Lines Between lots 3,4,5 & 6, P.B. 25, Pg. 936-1/11/10

PETSWORTH DISTRICT

INSERT 12B

REV. 1/63, 12/31/83/84/86/88/92/93/94/95/01/09/10/12/15
 REV. 12/75



PETSWORTH DISTRICT

VIRGINIA STATE DEPARTMENT OF TOURISM, DIVISION OF REAL ESTATE APPRAISAL AND MAPPING

INSERT 12A & 12B