

GLOUCESTER COUNTY SURVEY MARK DATA SHEET

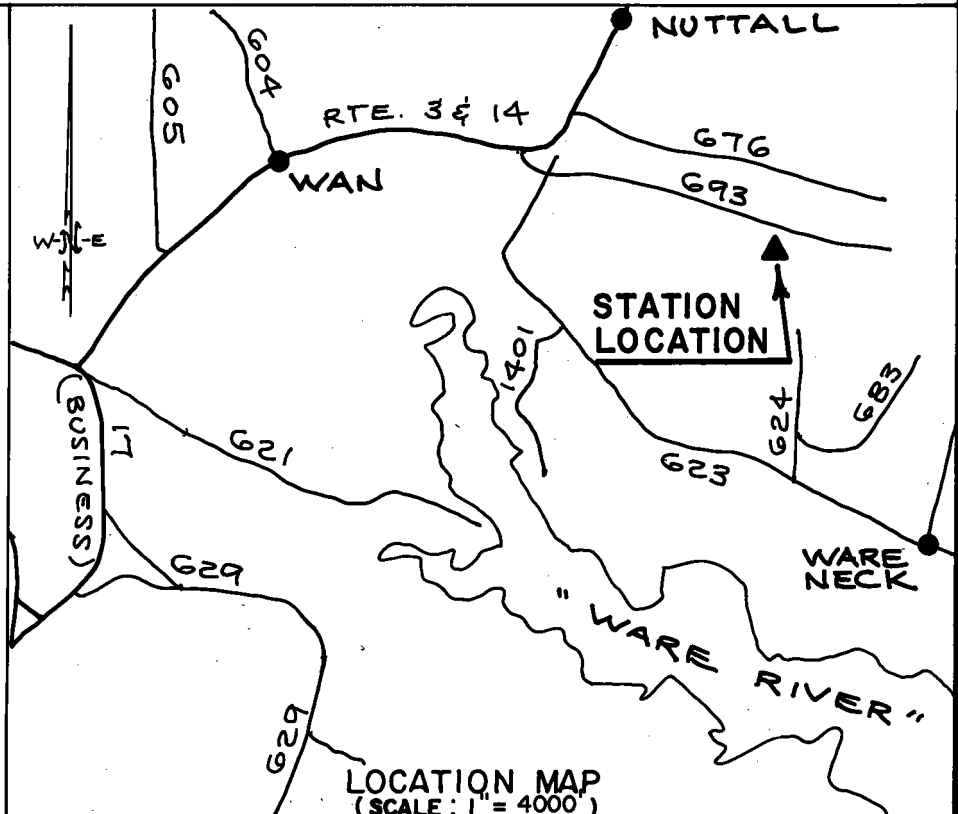
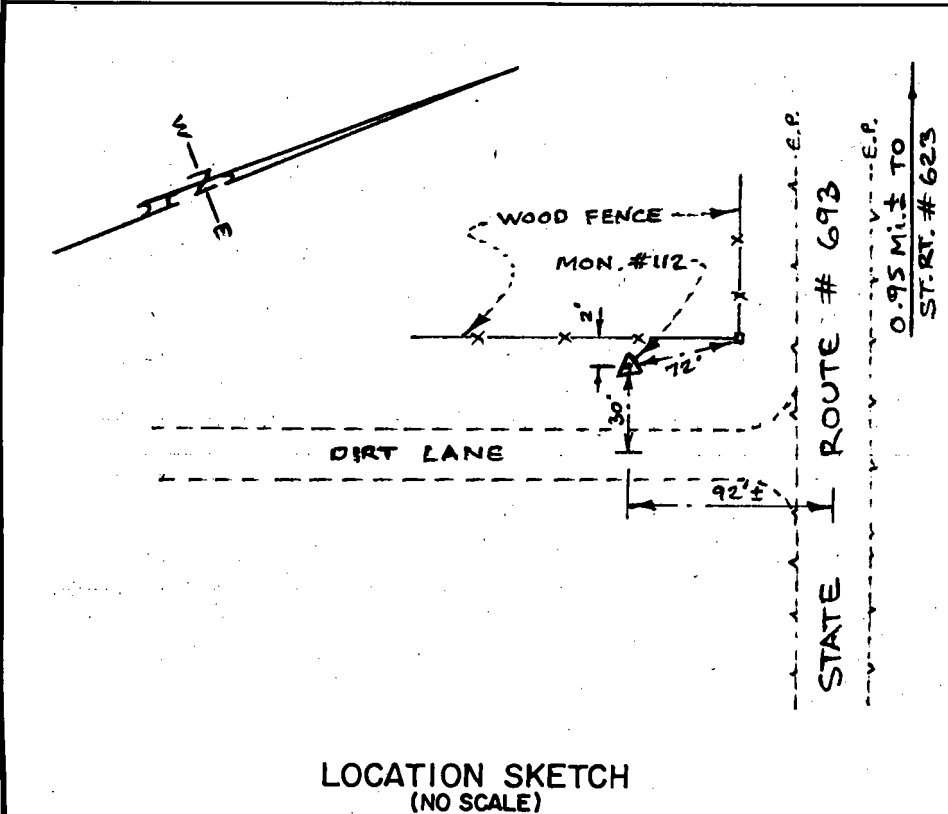
STATION NO.
112

HORIZONTAL DATA : VA. STATE PLANE COORD. - SOUTH ZONE (NAD 1983)		
UNITS	EASTING (X)	NORTHING (Y)
METERS	3679707.181	112585.161
U.S. SURVEY FT.	12072505.976	3683014.816
LATITUDE (DMS)		37 25 13.93722
LONGITUDE (DMS)		76 28 10.49211
SCALE FACTOR		0.99994583
CONVERGENCE \sphericalangle (DMS)		1 13 56.32
VERTICAL DATA : REF. TO NATL. GEOD. VERT. DATUM (1988)		
UNITS	STATION ELEVATION	
METERS	3.99	
U.S. SURVEY FT.	13.09	

STATION DESCRIPTION :

DISTRICT : WARE

A 3-1/4" ALUMINUM DISK MONUMENT SET APPROXIMATELY FLUSH WITH THE GROUND STAMPED STATION NO. 112. TO REACH: FROM THE INTERSECTION OF STATE ROUTE 3 & 14 AND STATE ROUTE 623 AT FLAT IRON, GO ABOUT 0.16 MILE SOUTHWEST ON STATE ROUTE 623 TO INTERSECTION OF STATE ROUTE 623 AND STATE ROUTE 693; GO ABOUT 0.95 MILE SOUTHEAST ON STATE ROUTE 693 TO MONUMENT SITE ON SOUTH SIDE OF STATE ROUTE 693 AND ON THE WEST SIDE OF A PRIVATE LANE.



DATE: JANUARY, 1992

NOTE: USERS OF MONUMENTS LOCATED ON PRIVATE PROPERTY
MUST OBTAIN LAND OWNERS PERMISSION BEFORE ENTERING



DAWSON & PHILLIPS, D.C.
CERTIFIED LAND SURVEYORS
(804) 693-2993