

GLOUCESTER COUNTY SURVEY MARK DATA SHEET

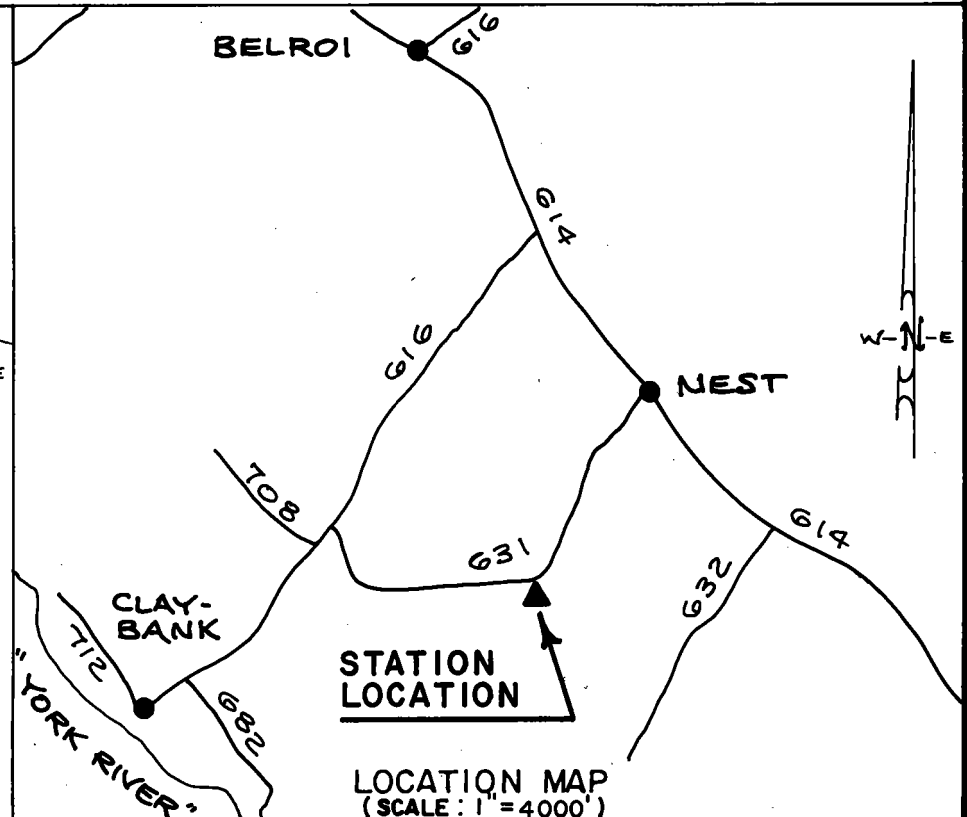
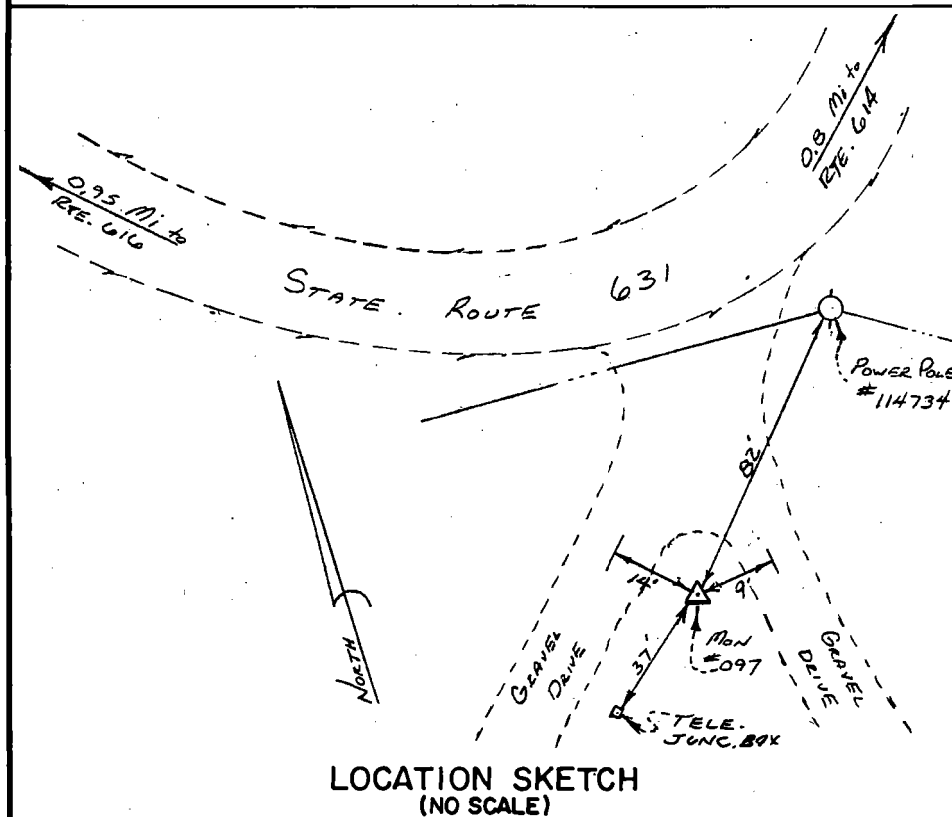
STATION NO.
097

HORIZONTAL DATA :		
VA. STATE PLANE COORD. - SOUTH ZONE (NAD 1983)		
UNITS	EASTING (X)	NORTHING (Y)
METERS	3670131.000	1115348.569
U.S. SURVEY FT.	12041088.122	3659272.763
LATITUDE (DMS)		37 21 25.74368
LONGITUDE (DMS)		76 34 45.87583
SCALE FACTOR		0.99994542
CONVERGENCE \sphericalangle (DMS)		1 9 56.35
VERTICAL DATA :		
REF. TO NATL. GEOD. VERT. DATUM (1988)		
UNITS	STATION ELEVATION	
METERS	13.66	
U.S. SURVEY FT.	44.82	

STATION DESCRIPTION :

DISTRICT : PETSORTH

A 3-1/4" ALUMINUM DISK MONUMENT SET APPROXIMATELY FLUSH WITH THE GROUND STAMPED STATION NO. 097. TO REACH: FROM THE INTERSECTION OF U. S. ROUTE 17 (BYPASS) AND STATE ROUTE 616, GO ABOUT 3.6 MILES SOUTHWEST ON STATE ROUTE 616 TO THE INTERSECTION OF STATE ROUTE 616 AND STATE ROUTE 614; GO ABOUT 0.9 MILE SOUTHEAST ON STATE ROUTE 614 TO THE INTERSECTION OF STATE ROUTE 614 AND STATE ROUTE 616; GO ABOUT 1.4 MILES SOUTHWEST ON STATE ROUTE 616 TO THE INTERSECTION OF STATE ROUTE 616 AND STATE ROUTE 631; GO ABOUT 0.95 MILE SOUTHEAST ON STATE ROUTE 631 TO THE INTERSECTION OF STATE ROUTE 631 AND TWO GRAVEL DRIVES; GO ABOUT 100' SOUTH ON GRAVEL DRIVES TO MONUMENT SITE.



DATE: JANUARY, 1992

NOTE: USERS OF MONUMENTS LOCATED ON PRIVATE PROPERTY
MUST OBTAIN LAND OWNERS PERMISSION BEFORE ENTERING



DAWSON & PHILLIPS, P.C.
CERTIFIED LAND SURVEYORS
(804) 693-2993