

GLOUCESTER COUNTY SURVEY MARK DATA SHEET

STATION NO.

051

HORIZONTAL DATA :

VA. STATE PLANE COORD. - SOUTH ZONE (NAD 1983)

UNITS	EASTING (X)	NORTHING (Y)
METERS	3669069.036	1131278.668
U.S. SURVEY FT.	12037603.996	3711536.763
LATITUDE (DMS)	37 30 3.08268	
LONGITUDE (DMS)	76 35 15.91019	
SCALE FACTOR	0.99994810	
CONVERGENCE α (DMS)	1 9 38.13	

STATION DESCRIPTION :

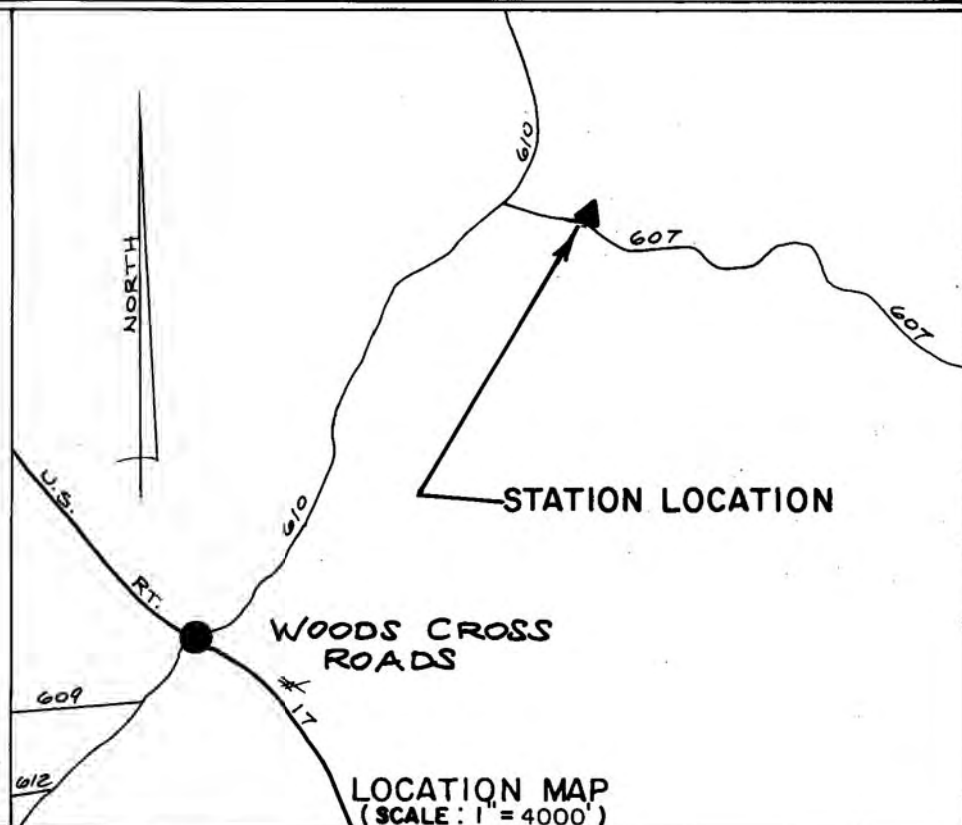
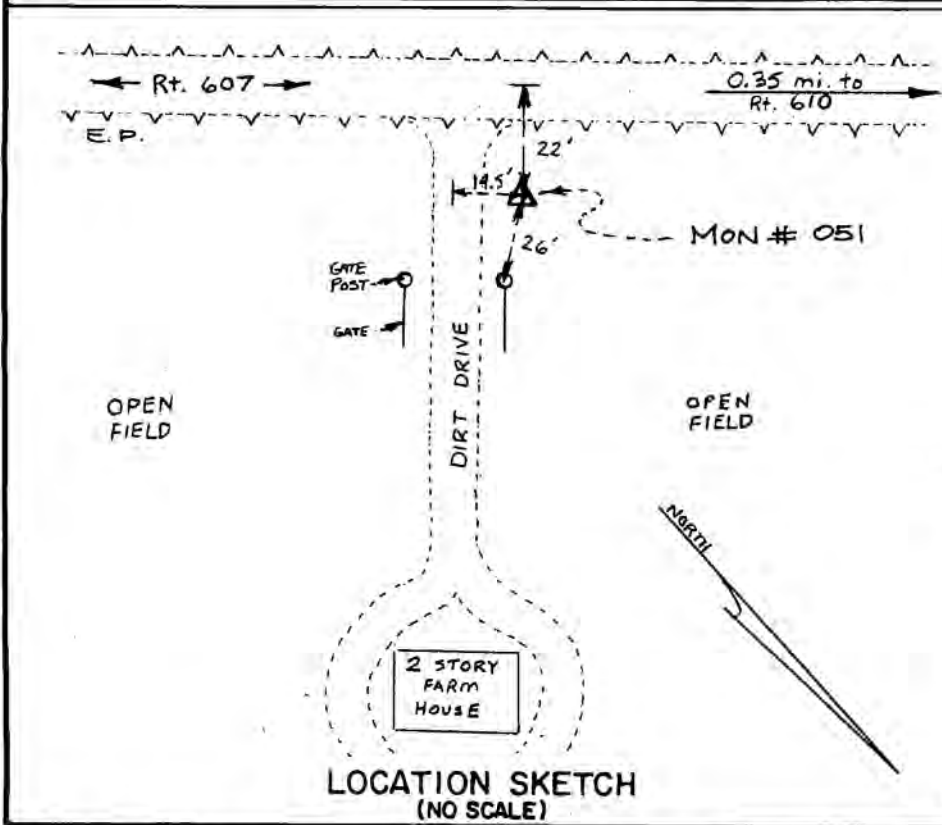
DISTRICT : PETSORTH

A 3-1/4" ALUMINUM DISK MONUMENT SET APPROXIMATELY FLUSH WITH THE GROUND STAMPED STATION NO. 051. TO REACH: FROM THE INTERSECTION OF U. S. ROUTE 17 AND STATE ROUTE 610 AT WOODS CROSS ROADS, GO ABOUT 2.2 MILES NORTHEAST ON STATE ROUTE 610 TO INTERSECTION WITH STATE ROUTE 607; GO ABOUT 0.35 MILE EAST ON STATE ROUTE 607 TO MONUMENT SITE ON NORTH SIDE OF STATE ROUTE 607.

VERTICAL DATA :

REF. TO NATL. GEOD. VERT. DATUM (1988)

UNITS	STATION ELEVATION
METERS	31.03
U.S. SURVEY FT.	101.80



DATE: JANUARY, 1992

NOTE: USERS OF MONUMENTS LOCATED ON PRIVATE PROPERTY MUST OBTAIN LAND OWNERS PERMISSION BEFORE ENTERING



DAWSON & PHILLIPS, D.C.

CERTIFIED LAND SURVEYORS
(804) 693-2993