

Chesterfield County Office
6807 Mimms Loop
P.O. Box 146
Chesterfield, Virginia 23832
(804) 751-4401 FAX: (804) 751-0515

T. Michael Likins
Extension Agent, Chesterfield County

Comparison between *Discula* Disease and Spot Anthracnose

Dogwood Anthracnose, *Discula destructiva*

Medium-large, purple-bordered leaf spots and scorched, tan blotches. **Eraser-sized.**



Symptoms can occur throughout the growing season.

Infections can move down the petiole and into the stem.

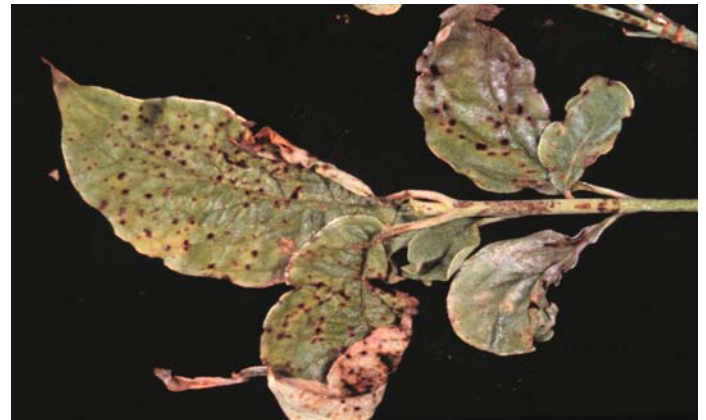
Twig dieback; branch and main trunk cankers; tree mortality.

Cultural conditions determine severity; healthy plants withstand infection better.

Fungicides recommended **ONLY** as a component of IPM.

Spot Anthracnose, *Elsinoë corni*

Small, reddish-purple leaf spots that are circular or elongated. **Pencil lead-sized.**



Symptoms are noticed in early spring, usually on bracts first.

Infection is confined to bracts and leaves.

No mortality.

Dry weather before and during flowering will result in little infection.

No fungicides warranted.