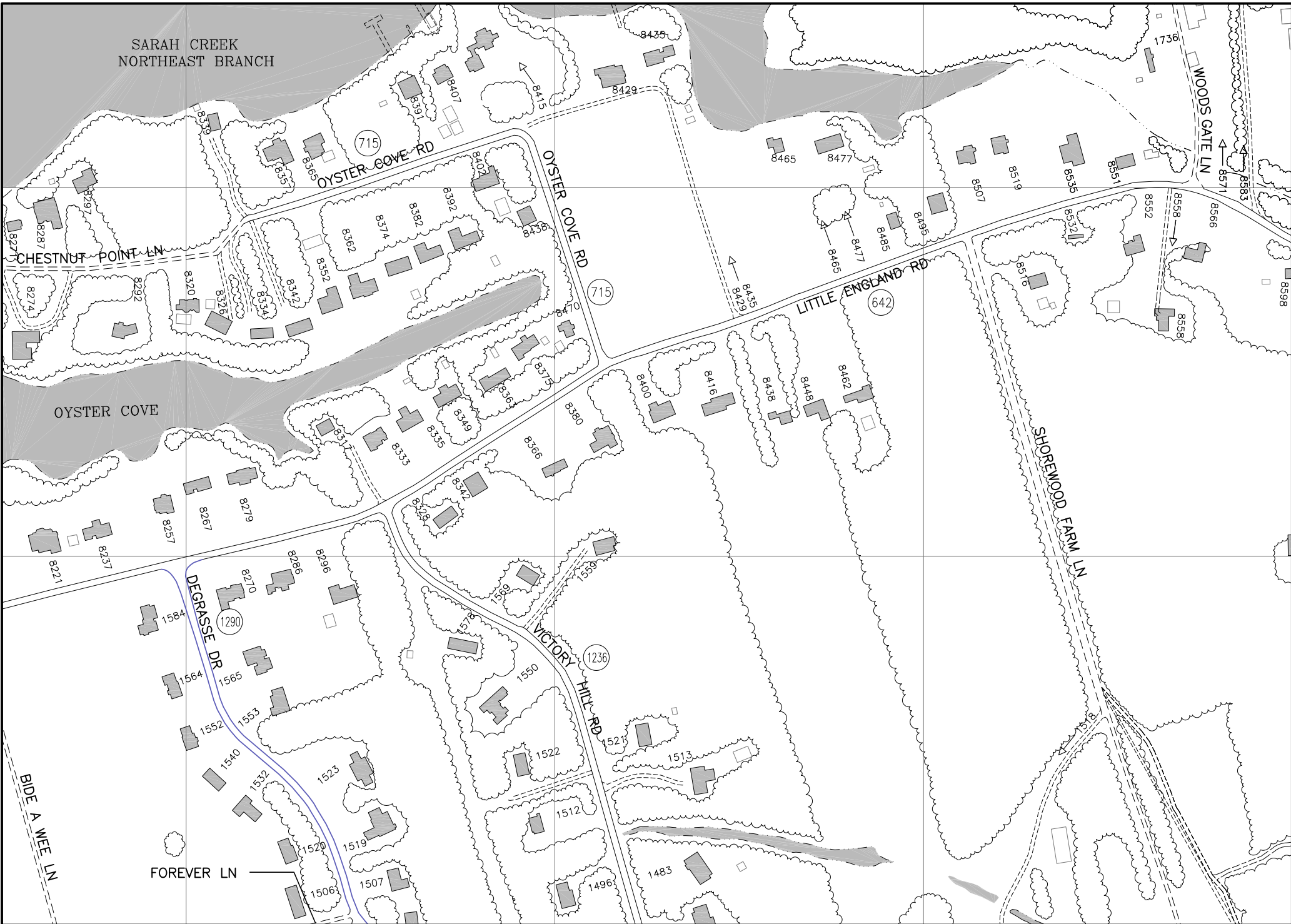


SARAH CREEK
NORTHEAST BRANCH



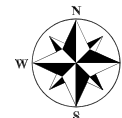
LAST REVISION DATE - 12/31/10

SCALED TO FIT

GRID LINES ARE 1000' APART IN ALL DIRECTIONS.



GLoucester County, VA
ENHANCED 911
PLANIMETRIC MAPPING



Surrounding Sheets

249A	249C	250A
249B	249D	250B
256	256	257

Sheet Number

249D

Sheet 249D of 264